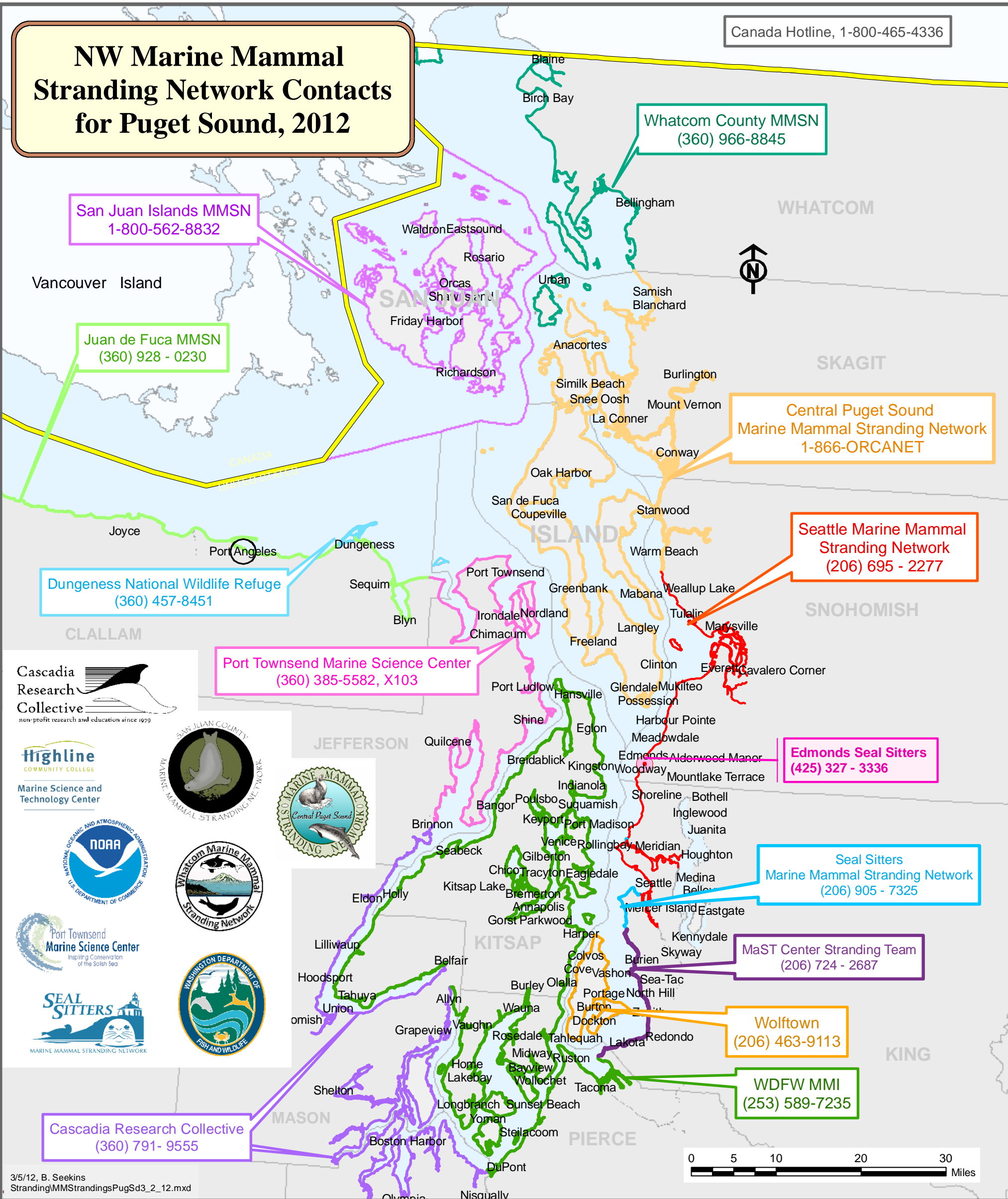


NW Marine Mammal Stranding Network Contacts for Puget Sound, 2012



Cascadia Research Collective
non-profit research and education since 1979

Highline Community College
Marine Science and Technology Center



Port Townsend Marine Science Center
Inspiring Conservation of the Salish Sea



**NOAA Enforcement and Marine Mammal Stranding Hotline:
1-800-853-1964**

Data Sources;

NOAA Fisheries / NW Region, Information Technology (Portland Office) produced most of the Marine Mammal Stranding Network shoreline segment designations using text descriptions in conjunction with NOAA's Medium Resolution Shorelines and county boundaries from the Interior Columbia Basin Ecosystem Management Project (ICBEMP).

Dungeness National Wildlife Refuge;
U.S. Fish and Wildlife Service, Division of Realty & Refuge Information

U.S. Exclusive Economic Zone (1995): NOAA, Special Projects Office

Canadian Shoreline;
Global Self-Consistent, Hierarchical, High-resolution Shoreline Database (1999), P. Wessel & W.H.F.Smith

Legend

- Edmonds Seal Sitters, (425) 327 - 3336
- Port Angeles, Olympic Coast National Marine Sanctuary Office (360) 457-6622
- Seattle Marine Mammal Stranding Network, (206) 695 - 2277
- Seal Sitters Marine Mammal Stranding Network, (206) 905 - 7325
- MaST Center Stranding Team, (206) 724 - 2687
- East Jefferson County, Port Townsend Marine Science Center, (360) 385 - 5582, X103
- Vashon, Maury Islands, Wolftown, (206) 463 - 9113
- Whatcom Marine Mammal Stranding Network, (360) 966 - 8845
- Juan de Fuca Marine Mammal Stranding Network, (360) 928 - 0230
- WDFW Marine Mammal Investigations, (253) 589-7235
- Cascadia Research Collective, (360) 791- 9555
- Dungeness National Wildlife Refuge Protection Island, (360) 457-8451
- Central Puget Sound, Marine Mammal Stranding Network, 1-866-ORCANET
- Exclusive Economic Zone Boundary
- Canada
- San Juan Islands, The Whale Museum, 1-800-562-8832
- County Boundaries