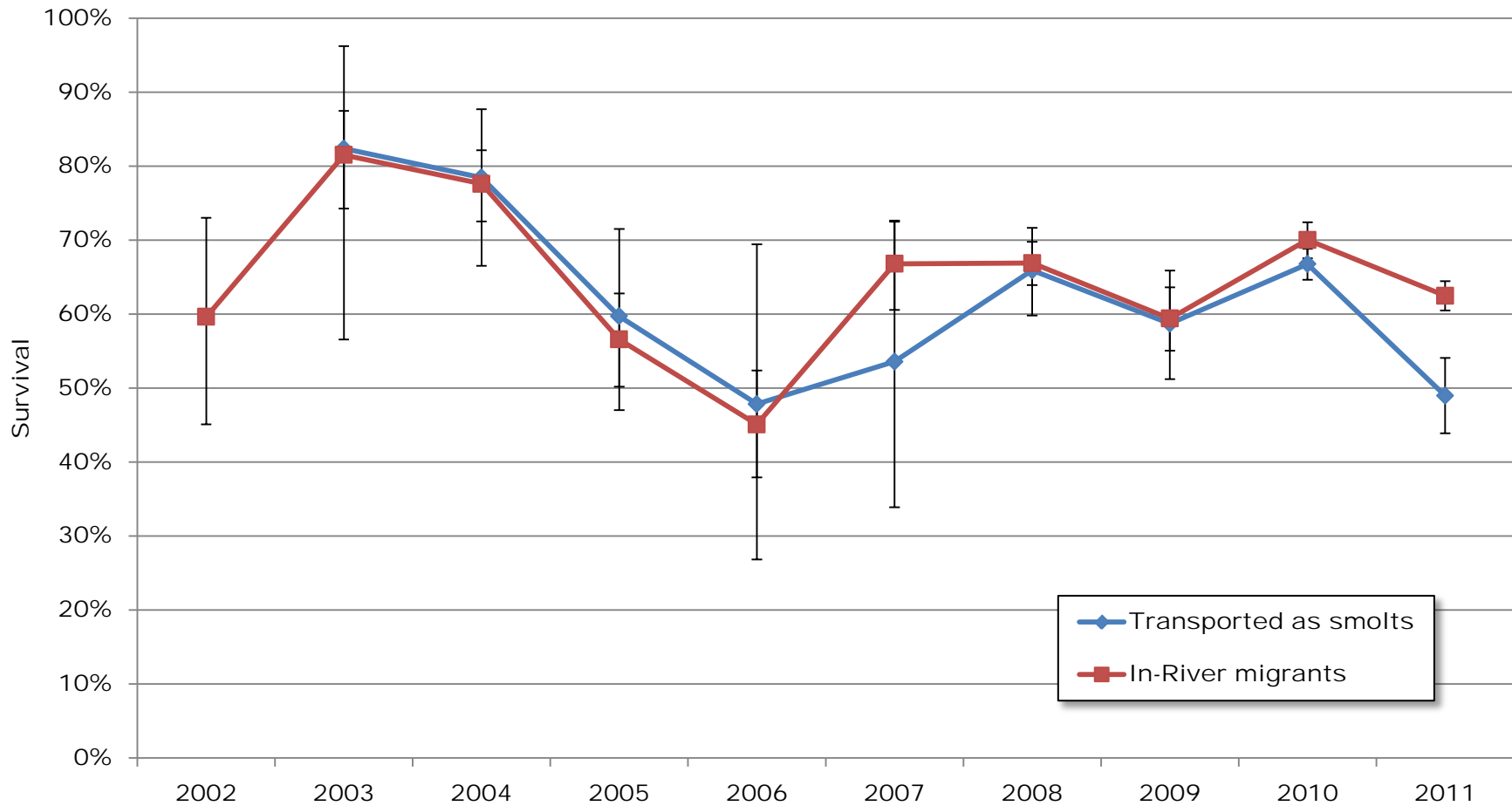




Snake River Fall Chinook adult upstream survival: Bonneville Dam to Lower Granite Dam

Minimum estimates of upstream passage survival Bonneville to Lower Granite Dams of known-origin adult Snake River Fall Chinook, not adjusted for straying and harvest with



Reach survival estimates represent the proportion of PIT tags observed at the downstream dam which were later observed at the upstream dam (calculated as Upstream PIT tags / Downstream PIT tags) and should be considered a minimum estimate of survival. No corrections were made for harvest or straying, so the estimate of mortality (1-survival) includes all human-related (dams, harvest, etc.) and natural (straying, natural mortalities, etc.) factors that affect adult survival in the defined reach.