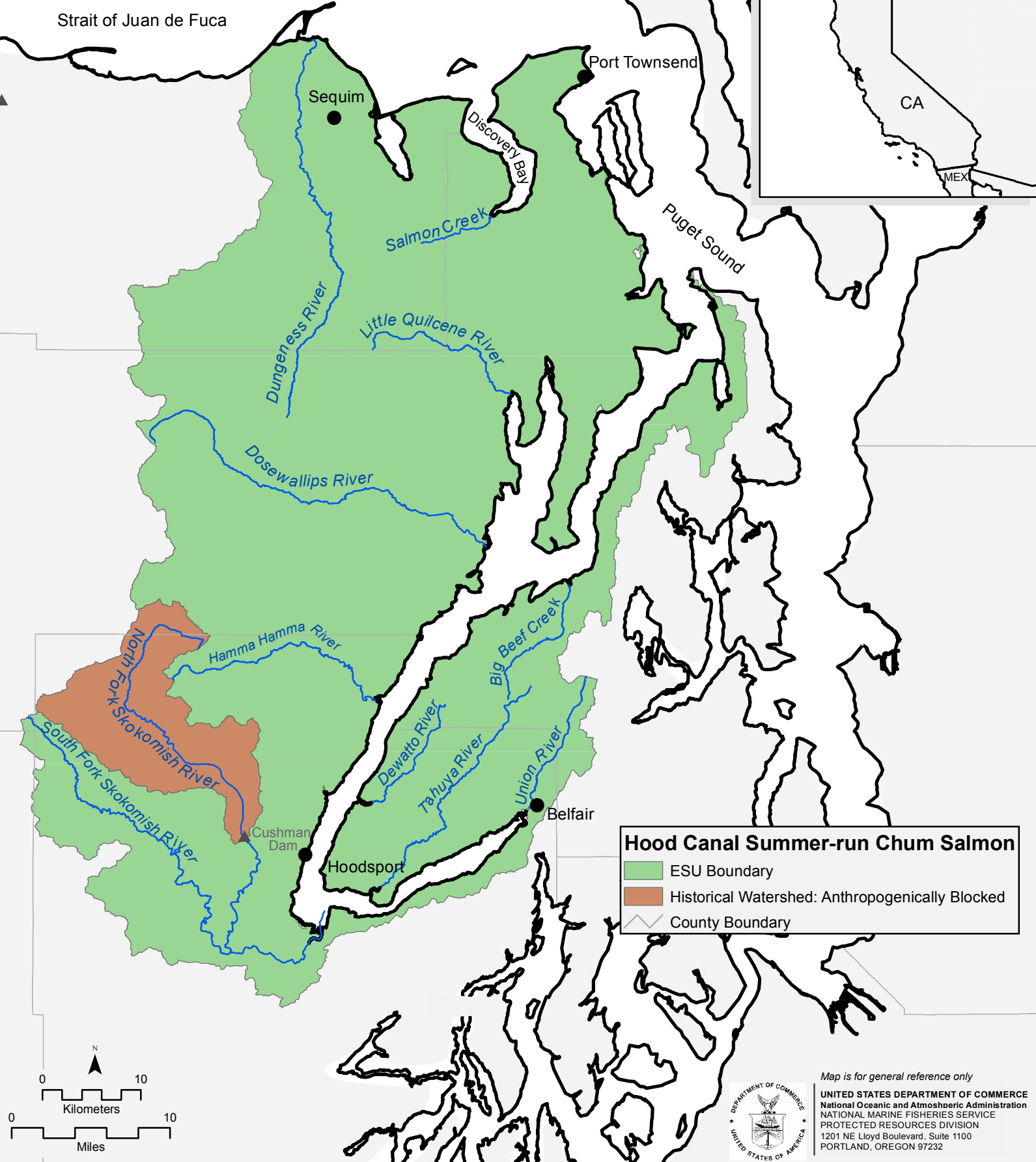
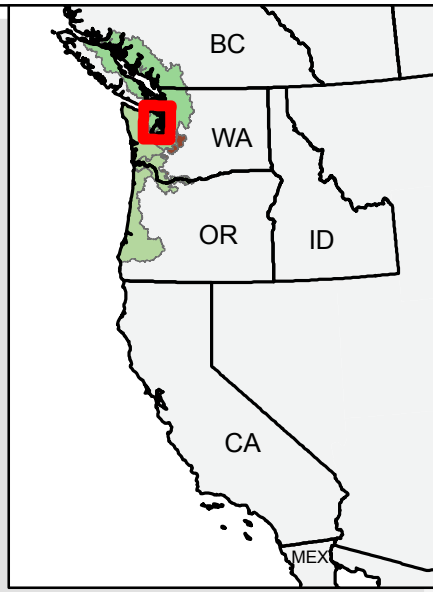




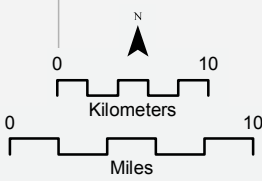
# Hood Canal Summer-run Chum Salmon Evolutionarily Significant Unit

Current as of January 2013



**Hood Canal Summer-run Chum Salmon**

- ESU Boundary
- Historical Watershed: Anthropogenically Blocked
- County Boundary



Map is for general reference only  
 UNITED STATES DEPARTMENT OF COMMERCE  
 National Oceanic and Atmospheric Administration  
 NATIONAL MARINE FISHERIES SERVICE  
 PROTECTED RESOURCES DIVISION  
 1201 NE Lloyd Boulevard, Suite 1100  
 PORTLAND, OREGON 97232