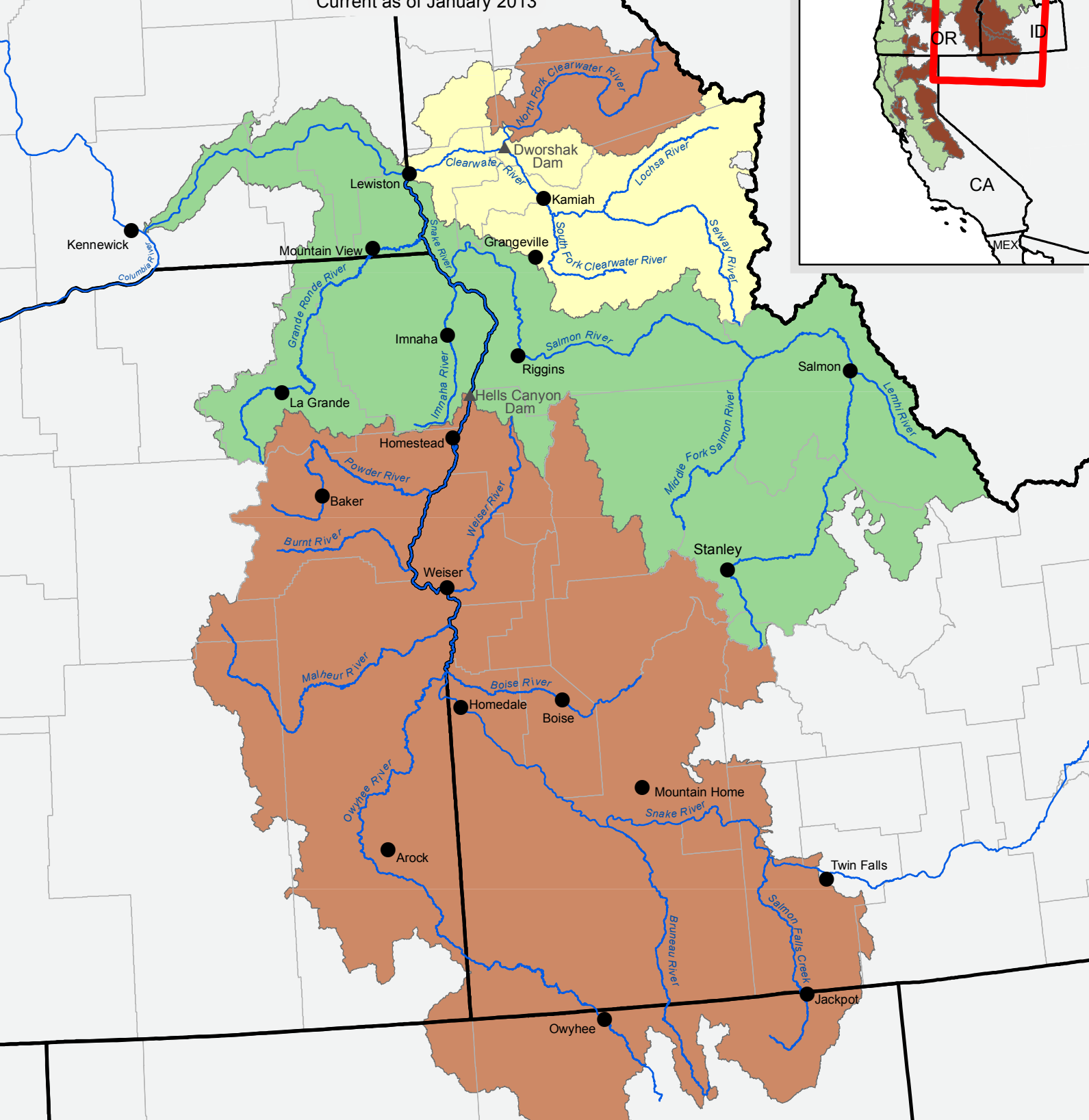
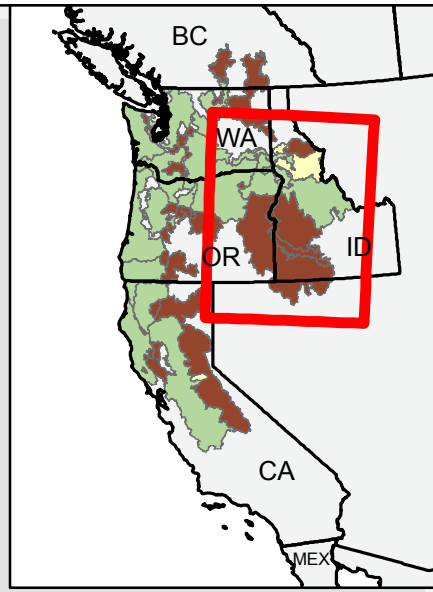




Snake River Spring\Summer-run Chinook Salmon

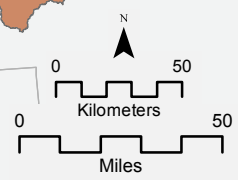
Evolutionarily Significant Unit

Current as of January 2013



Snake River Spring\Summer-run Chinook Salmon

- ESU Boundary
- Historical Watershed: Anthropogenically Blocked
- Functionally Extirpated
- County Boundary



Map is for general reference only
UNITED STATES DEPARTMENT OF COMMERCE
 National Oceanic and Atmospheric Administration
 NATIONAL MARINE FISHERIES SERVICE
 PROTECTED RESOURCES DIVISION
 1201 NE Lloyd Boulevard, Suite 1100
 PORTLAND, OREGON 97232