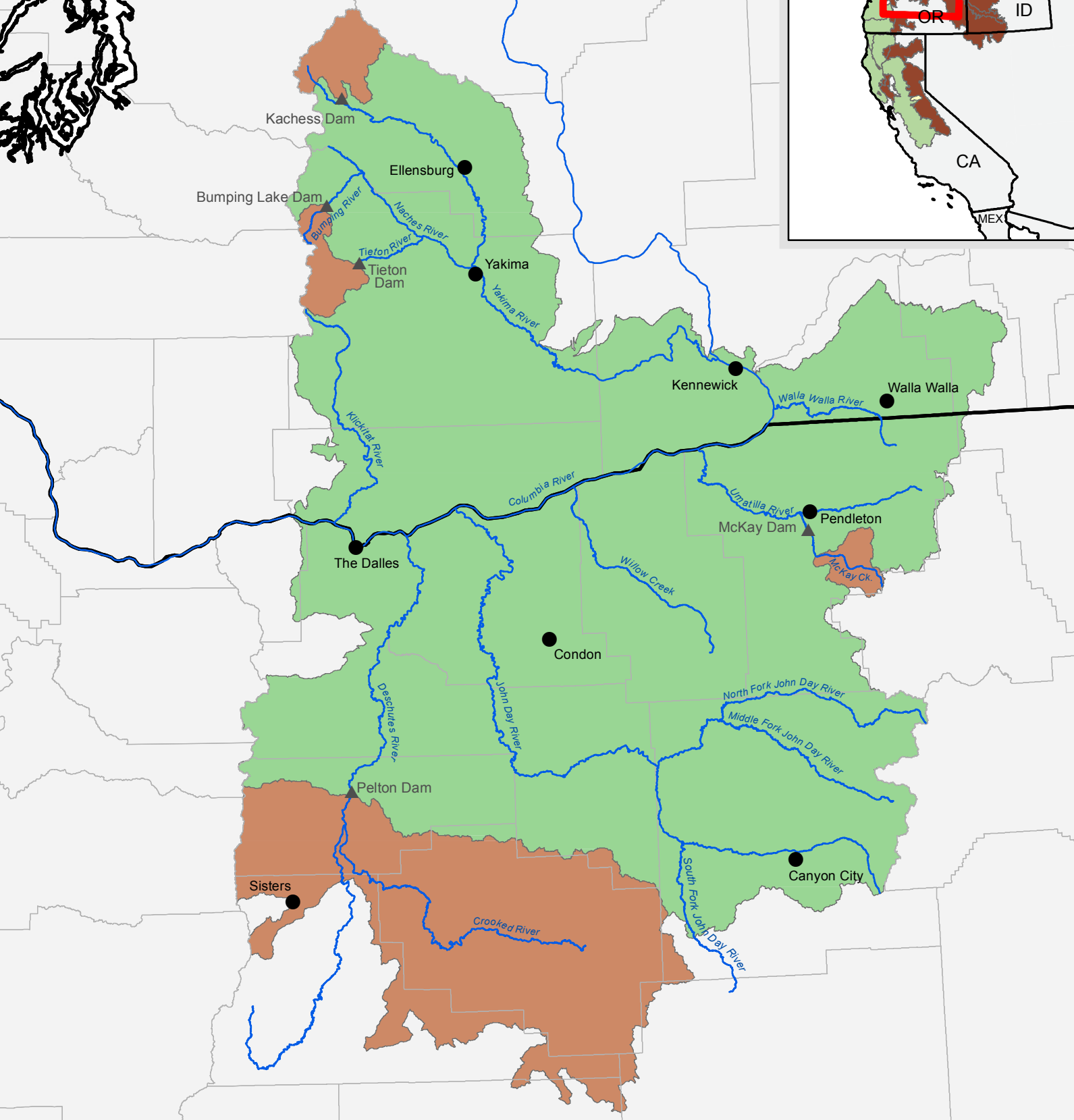
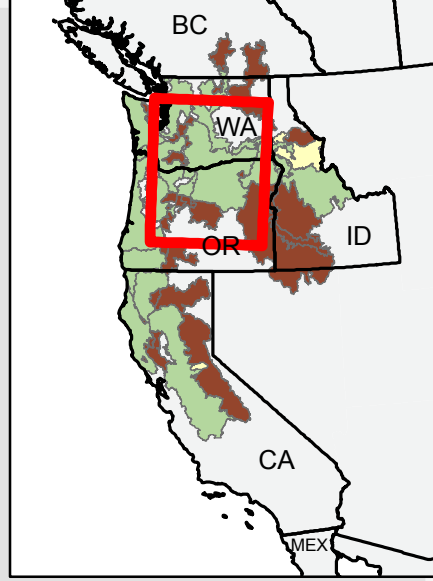


# Mid-Columbia River Spring-run Chinook Salmon

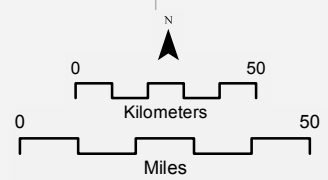
## Evolutionarily Significant Unit

Current as of January 2013



**Mid-Columbia River Spring-run Chinook Salmon**

- ESU Boundary
- Historical Watershed: Anthropogenically Blocked
- County Boundary



*Map is for general reference only*  
**UNITED STATES DEPARTMENT OF COMMERCE**  
 National Oceanic and Atmospheric Administration  
 NATIONAL MARINE FISHERIES SERVICE  
 PROTECTED RESOURCES DIVISION  
 1201 NE Lloyd Boulevard, Suite 1100  
 PORTLAND, OREGON 97232