

Note – This document contains only the regulations describing critical habitat for the

Northern California Steelhead ESU

as published in the *Federal Register* on Sept. 2, 2005 (70FR52488 - 52627). These pages have been extracted from the FR notice to assist those readers interested only in the maps and regulatory text pertaining to this ESU. The complete FR notice can be downloaded at: <http://www.nwr.noaa.gov/Publications/FR-Notices/2005/Index.cfm>.

List of Subjects in 50 CFR Part 226

Endangered and threatened species.

Dated: August 12, 2005.

William T. Hogarth,

*Assistant Administrator for Fisheries,
National Marine Fisheries Service.*

■ For the reasons set out in the preamble, we amend part 226, title 50 of the Code of Regulations as set forth below:

PART 226—[AMENDED]

■ 1. The authority citation of part 226 continues to read as follows:

Authority: 16 U.S.C. 1533.

■ 2. Add § 226.211 to read as follows:

§ 226.211 Critical habitat for Seven Evolutionarily Significant Units (ESUs) of Salmon (*Oncorhynchus spp.*) in California.

Critical habitat is designated in the following California counties for the following ESUs as described in paragraph (a) of this section, and as further described in paragraphs (b) through (e) of this section. The textual descriptions of critical habitat for each ESU are included in paragraphs (f) through (l) of this section, and these descriptions are the definitive source for determining the critical habitat boundaries. General location maps are provided at the end of each ESU description (paragraphs (f) through (l) of this section) and are provided for general guidance purposes only, and not as a definitive source for determining critical habitat boundaries.

(a) Critical habitat is designated for the following ESUs in the following California counties:

ESU	State—counties
(1) California Coastal Chinook	CA—Humboldt, Trinity, Mendocino, Sonoma, Lake, Napa, Glenn, Colusa, and Tehama.
(2) Northern California Steelhead	CA—Humboldt, Trinity, Mendocino, Sonoma, Lake, Glenn, Colusa, and Tehama.
(3) Central California Coast Steelhead	CA—Lake, Mendocino, Sonoma, Napa, Marin, San Francisco, San Mateo, Santa Clara, Santa Cruz, Alameda, Contra Costa, and San Joaquin.
(4) South-Central Coast Steelhead	CA—Monterey, San Benito, Santa Clara, Santa Cruz, San Luis Obispo.
(5) Southern California Steelhead	CA—San Luis Obispo, Santa Barbara, Ventura, Los Angeles, Orange and San Diego.
(6) Central Valley spring-run Chinook	CA—Tehama, Butte, Glenn, Shasta, Yolo, Sacramento, Solano, Colusa, Yuba, Sutter, Trinity, Alameda, San Joaquin, and Contra Costa.
(7) Central Valley Steelhead	CA—Tehama, Butte, Glenn, Shasta, Yolo, Sacramento, Solana, Yuba, Sutter, Placer, Calaveras, San Joaquin, Stanislaus, Tuolumne, Merced, Alameda, Contra Costa.

(b) *Critical habitat boundaries.*

Critical habitat includes the stream channels within the designated stream reaches, and includes a lateral extent as defined by the ordinary high-water line (33 CFR 329.11). In areas where the ordinary high-water line has not been defined, the lateral extent will be defined by the bankfull elevation. Bankfull elevation is the level at which water begins to leave the channel and move into the floodplain and is reached at a discharge which generally has a recurrence interval of 1 to 2 years on the annual flood series. Critical habitat in estuaries (e.g. San Francisco-San Pablo-Suisun Bay, Humboldt Bay, and Morro Bay) is defined by the perimeter of the water body as displayed on standard 1:24,000 scale topographic maps or the elevation of extreme high water, whichever is greater.

(c) *Primary constituent elements.*

Within these areas, the primary constituent elements essential for the conservation of these ESUs are those sites and habitat components that support one or more life stages, including:

- (1) Freshwater spawning sites with water quantity and quality conditions and substrate supporting spawning, incubation and larval development;
- (2) Freshwater rearing sites with:
 - (i) Water quantity and floodplain connectivity to form and maintain physical habitat conditions and support juvenile growth and mobility;
 - (ii) Water quality and forage supporting juvenile development; and
 - (iii) Natural cover such as shade, submerged and overhanging large wood, log jams and beaver dams, aquatic vegetation, large rocks and boulders, side channels, and undercut banks.
- (3) Freshwater migration corridors free of obstruction and excessive predation with water quantity and quality conditions and natural cover such as submerged and overhanging large wood, aquatic vegetation, large rocks and boulders, side channels, and undercut banks supporting juvenile and adult mobility and survival.
- (4) Estuarine areas free of obstruction and excessive predation with:
 - (i) Water quality, water quantity, and salinity conditions supporting juvenile and adult physiological transitions between fresh- and saltwater;
 - (ii) Natural cover such as submerged and overhanging large wood, aquatic vegetation, large rocks and boulders, side channels; and
 - (iii) Juvenile and adult forage,

including aquatic invertebrates and fishes, supporting growth and maturation.

(d) *Exclusion of Indian lands.* Critical habitat does not include occupied habitat areas on Indian lands. The Indian lands specifically excluded from critical habitat are those defined in the Secretarial Order, including:

- (1) Lands held in trust by the United States for the benefit of any Indian tribe;
- (2) Land held in trust by the United States for any Indian Tribe or individual subject to restrictions by the United States against alienation;
- (3) Fee lands, either within or outside the reservation boundaries, owned by the tribal government; and
- (4) Fee lands within the reservation boundaries owned by individual Indians.

(e) *Land owned or controlled by the Department of Defense.* Additionally, critical habitat does not include the following areas owned or controlled by the Department of Defense, or designated for its use, that are subject to an integrated natural resources management plan prepared under section 101 of the Sikes Act (16 U.S.C. 670a):

- (1) Camp Pendleton Marine Corps Base;
- (2) Vandenberg Air Force Base;
- (3) Camp San Luis Obispo;
- (4) Camp Roberts; and
- (5) Mare Island Army Reserve Center.

(g) *Northern California Steelhead (O. mykiss)*. Critical habitat is designated to include the areas defined in the following CALWATER Hydrologic units:

(1) Redwood Creek Hydrologic Unit 1107—(i) *Orick Hydrologic Sub-area 110710*. Outlet(s) = Boat Creek (Lat 41.4059, Long -124.0675); Home Creek (41.4027, -124.0683); Redwood Creek (41.2923, -124.0917); Squashan Creek (41.3889, -124.0703) upstream to endpoint(s) in: Boat Creek (41.4110, -124.0583); Bond Creek (41.2326, -124.0262); Boyes Creek (41.3701, -124.9891); Bridge Creek (41.1694, -123.9964); Brown Creek (41.3986, -124.0012); Cloquet Creek (41.2466, -123.9884); Cole Creek (41.2209, -123.9931); Copper Creek (41.1516, -123.9258); Dolason Creek (41.1969, -123.9667); Elam Creek (41.2613, -124.0321); Emerald Creek (41.2164, -123.9808); Forty Four Creek (41.2187, -124.0195); Gans South Creek (41.2678, -124.0071); Godwood Creek (41.3787, -124.0354); Hayes Creek (41.2890, -124.0164); Home Creek (41.3951, -124.0386); Larry Dam Creek (41.3441, -123.9966); Little Lost Man Creek (41.3078, -124.0084); Lost Man Creek (41.3187, -123.9892); May Creek (41.3521, -124.0164); McArthur Creek (41.2702, -124.0427); Miller Creek (41.2305, -124.0046); North Fork Lost Man Creek (41.3405, -123.9859); Oscar Larson Creek (41.2559, -123.9943); Prairie Creek (41.4440, -124.0411); Skunk Cabbage Creek (41.3211, -124.0802); Slide Creek (41.1736, -123.9450); Squashan Creek (41.3739, -124.0440); Streelow Creek (41.3622, -124.0472); Tom McDonald Creek (41.1933, -124.0164); Unnamed Tributary (41.3619, -123.9967); Unnamed Tributary (41.3424, -124.0572).

(ii) *Beaver Hydrologic Sub-area 110720*. Outlet(s) = Redwood Creek (Lat 41.1367, Long -123.9309) upstream to endpoint(s) in: Beaver Creek (41.0208, -123.8608); Captain Creek (40.9199, -123.7944); Cashmere Creek (41.0132, -123.8862); Coyote Creek (41.1251, -123.8926); Devils Creek (41.1224, -123.9384); Garcia Creek (41.0180, -123.8923); Garrett Creek (41.0904, -123.8712); Karen Court Creek (41.0368, -123.8953); Lacks Creek (41.0306, -123.8096); Loin Creek (40.9465, -123.8454); Lupton Creek (40.9058, -123.8286); Mill Creek (41.0045, -123.8525); Minor Creek (40.9706, -123.7899); Molasses Creek (40.9986, -123.8490); Moon Creek (40.9807, -123.8368); Panther Creek (41.0732, -123.9275); Pilchuck Creek (41.9986, -123.8710); Roaring Gulch (41.0319, -123.8674); Santa Fe Creek (40.9368,

-123.8397); Sweathouse Creek (40.9332, -123.8131); Toss-Up Creek (40.9845, -123.8656); Unnamed Tributary (41.1270, -123.8967); Wiregrass Creek (40.9652, -123.8553).

(iii) *Lake Prairie Hydrologic Sub-area 110730*. Outlet(s) = Redwood Creek (Lat 40.9070, Long -123.8170) upstream to endpoint(s) in: Bradford Creek (40.7812, -123.7215); Cut-Off Meander (40.8507, -123.7729); Emmy Lou Creek (40.8655, -123.7771); Gunrack Creek (40.8391, -123.7650); High Prairie Creek (40.8191, -123.7723); Jena Creek (40.8742, -123.8065); Lake Prairie Creek (40.7984, -123.7558); Lupton Creek (40.9058, -123.8286); Minon Creek (40.8140, -123.7372); Noisy Creek (40.8613, -123.8044); Pardee Creek (40.7779, -123.7416); Redwood Creek (40.7432, -123.7206); Simon Creek (40.8241, -123.7560); Six Rivers Creek (40.8352, -123.7842); Smokehouse Creek (40.7405, -123.7278); Snowcamp Creek (40.7415, -123.7296); Squirrel Trail Creek (40.8692, -123.7844); Twin Lakes Creek (40.7369, -123.7214); Panther Creek (40.8019, -123.7094); Windy Creek (40.8866, -123.7956).

(2) *Trinidad Hydrologic Unit 1108—(i) Big Lagoon Hydrologic Sub-area 110810*. Outlet(s) = Maple Creek (Lat 41.1555, Long -124.1380); McDonald Creek (41.2521, -124.0919) upstream to endpoint(s) in: Beach Creek (41.0716, -124.0239); Clear Creek (41.1031, -124.0030); Diamond Creek (41.1571, -124.0926); Maple Creek (41.0836, -123.9790); McDonald Creek (41.1850, -124.0773); M-Line Creek (41.0752, -124.0787); North Fork Maple Creek (41.1254, -124.0539); North Fork McDonald Creek (41.2107, -124.0664); Pitcher Creek (41.1518, -124.0874); South Fork Maple Creek (41.1003, -124.1119); Tom Creek (41.1773, -124.0966); Unnamed Tributary (41.1004, -124.0155); Unnamed Tributary (41.0780, -124.0676); Unnamed Tributary (41.1168, -124.0886); Unnamed Tributary (41.0864, -124.0899); Unnamed Tributary (41.1132, -124.0827); Unnamed Tributary (41.0749, -124.0889); Unnamed Tributary (41.1052, -124.0675); Unnamed Tributary (41.0714, -124.0611); Unnamed Tributary (41.0948, -124.0016).

(ii) *Little River Hydrologic Sub-area 110820*. Outlet(s) = Little River (Lat 41.0277, Long -124.1112) upstream to endpoint(s) in: Freeman Creek (41.0242, -124.0582); Little River (40.9999, -123.9232); Lower South Fork Little River (41.0077, -124.0079); Railroad Creek (41.0468, -124.0466); South Fork Little River (40.9899, -124.0394); Unnamed Tributary (41.0356,

-123.9958); Unnamed Tributary (41.0407, -124.0598); Unnamed Tributary (41.0068, -123.9830); Unnamed Tributary (41.0402, -124.0111); Unnamed Tributary (41.0402, -124.0189); Unnamed Tributary (41.0303, -124.0366); Unnamed Tributary (41.0575, -123.9710); Unnamed Tributary (41.0068, -123.9830); Upper South Fork Little River (41.0146, -123.9826).

(3) *Mad River Hydrologic Unit 1109—(i) Blue Lake Hydrologic Sub-area 110910*. Outlet(s) = Mad River (Lat 40.9139, Long -124.0642); Strawberry Creek (40.9964, -124.1155); Widow White Creek (40.9635, -124.1253) upstream to endpoint(s) in: Boundary Creek (40.8395, -123.9920); Grassy Creek (40.9314, -124.0188); Hall Creek (40.9162, -124.0141); Kelly Creek (40.8656, -124.0260); Leggit Creek (40.8808, -124.0269); Lindsay Creek (40.9838, -124.0283); Mather Creek (40.9796, -124.0526); Mill Creek (40.9296, -124.1037); Mill Creek (40.9162, -124.0141); Mill Creek (40.8521, -123.9617); North Fork Mad River (40.8687, -123.9649); Norton Creek (40.9572, -124.1003); Palmer Creek (40.8633, -124.0193); Puter Creek (40.8474, -123.9966); Quarry Creek (40.8526, -124.0098); Squaw Creek (40.9426, -124.0202); Strawberry Creek (40.9761, -124.0630); Unnamed Tributary (40.9624, -124.0179); Unnamed Tributary (40.9549, -124.0554); Unnamed Tributary (40.9672, -124.0218); Warren Creek (40.8860, -124.0351); Widow White Creek (40.9522, -124.0784).

(ii) *North Fork Mad River Hydrologic Sub-area 110920*. Outlet(s) = North Fork Mad River (Lat 40.8687, Long -123.9649) upstream to endpoint(s) in: Bald Mountain Creek (40.8922, -123.9097); Canyon Creek (40.9598, -123.9269); Denman Creek (40.9293, -123.9429); East Fork North Fork (40.9702, -123.9449); Gosinta Creek (40.9169, -123.9420); Hutchery Creek (40.8730, -123.9503); Jackson Creek (40.9388, -123.9462); Krueger Creek (40.9487, -123.9571); Long Prairie Creek (40.9294, -123.8842); Mule Creek (40.9416, -123.9309); North Fork Mad River (40.9918, -123.9610); Pine Creek (40.9274, -123.9096); Pollock Creek (40.9081, -123.9071); Sullivan Gulch (40.8646, -123.9553); Tyson Creek (40.9559, -123.9738); Unnamed Tributary (40.9645, -123.9338); Unnamed Tributary (40.9879, -123.9511); Unnamed Tributary (40.9906, -123.9540); Unnamed Tributary (40.9866, -123.9788); Unnamed Tributary (40.9927, -123.9736).

(iii) *Butler Valley Hydrologic Sub-area 110930*. Outlet(s) = Mad River (Lat 40.8449, Long -123.9807) upstream to endpoint(s) in: Bear Creek (40.5468, -123.6728); Black Creek (40.7521, -123.9080); Black Dog Creek (40.8334, -123.9805); Blue Slide Creek (40.7333, -123.9225); Boulder Creek (40.7634, -123.8667); Bug Creek (40.6587, -123.7356); Cannon Creek (40.8535, -123.8850); Coyote Creek (40.6147, -123.6488); Devil Creek (40.8032, -123.9175); Dry Creek (40.8218, -123.9751); East Creek (40.5403, -123.5579); Maple Creek (40.7933, -123.8353); Pilot Creek (40.5950, -123.5888); Simpson Creek (40.8138, -123.9156); Unnamed Tributary (40.7306, -123.9019); Unnamed Tributary (40.7739, -123.9255); Unnamed Tributary (40.7744, -123.9137); Unnamed Tributary (40.8029, -123.8716); Unnamed Tributary (40.8038, -123.8691); Unnamed Tributary (40.8363, -123.9025).

(4) *Eureka Plain Hydrologic Unit 1110*—(i) *Eureka Plain Hydrologic Sub-area 111000*.

Outlet(s) = Elk River (Lat 40.7568, Long -124.1948); Freshwater Creek (40.8088, -124.1442); Jacoby Creek (40.8436, -124.0834); Mad River (40.9560, -124.1278); Rocky Gulch (40.8309, -124.0813); Salmon Creek (40.6868, -124.2194); Washington Gulch (40.8317, -124.0805) upstream to endpoint(s) in: Bridge Creek (40.6958, -124.0805); Browns Gulch (40.7038, -124.1074); Clapp Gulch (40.6967, -124.1684); Cloney Gulch (40.7826, -124.0347); Doe Creek (40.6964, -124.0201); Dunlap Gulch (40.7076, -124.1182); Falls Gulch (40.7655, -124.0261); Fay Slough (40.8033, -124.0574); Freshwater Creek (40.7385, -124.0035); Golf Course Creek (40.8406, -124.0402); Graham Gulch (40.7540, -124.0228); Gupitil Gulch (40.7530, -124.1202); Henderson Gulch (40.7357, -124.1394); Jacoby Creek (40.7949, -124.0096); Lake Creek (40.6848, -124.0831); Line Creek (40.6578, -124.0460); Little Freshwater Creek (40.7371, -124.0649); Little North Fork Elk River (40.6972, -124.0100); Little South Fork Elk River (40.6555, -124.0877); Martin Slough (40.7679, -124.1578); McCready Gulch (40.7824, -124.0441); McWinney Creek (40.6968, -124.0616); Morrison Gulch (40.8169, -124.0430); North Branch of the North Fork Elk River (40.6879, -124.0130); North Fork Elk River (40.6794-123.9834); Railroad Gulch (40.6955, -124.1545); Rocky Gulch (40.8170, -124.0613); Ryan Creek (40.7352, -124.0996); Salmon Creek (40.6399, -124.1128); South Branch of the North

Fork Elk River (40.6700, -124.0251); South Fork Elk River (40.6437, -124.0388); South Fork Freshwater Creek (40.7110, -124.0367); Swain Slough (40.7524, -124.1825); Tom Gulch (40.6794, -124.1452); Unnamed Tributary (40.7850, -124.0561); Unnamed Tributary (40.7496, -124.1651); Unnamed Tributary (40.7785, -124.1081); Unnamed Tributary (40.7667, -124.1054); Unnamed Tributary (40.7559, -124.0870); Unnamed Tributary (40.7952, -124.0568); Unnamed Tributary (40.7408, -124.1118); Unnamed Tributary (40.7186, -124.1385); Unnamed Tributary (40.7224, -124.1038); Unnamed Tributary (40.8210, -124.0111); Unnamed Tributary (40.8106, -124.0083); Unnamed Tributary (40.7554, -124.1379); Unnamed Tributary (40.7457, -124.1138); Washington Gulch (40.8205, -124.0549).

(ii) [Reserved]

(5) *Eel River Hydrologic Unit 1111*—(i) *Ferndale Hydrologic Sub-area 111111*. Outlet(s) = Eel River (Lat 40.6275, Long -124.2520) upstream to endpoint(s) in: Atwell Creek (40.4824, -124.1498); Dean Creek (40.4847, -124.1217); Horse Creek (40.5198, -124.1702); Howe Creek (40.4654, -124.1916); Nanning Creek (40.4914, -124.0652); North Fork Strongs Creek (40.6077, -124.1047); Price Creek (40.5101, -124.2731); Rohner Creek (40.6151, -124.1408); Strongs Creek (40.5999, -124.0985); Sweet Creek (40.4900, -124.2007); Van Duzen River (40.5337, -124.1262).

(ii) *Scotia Hydrologic Sub-area 111112*. Outlet(s) = Eel River (Lat 40.4918, Long -124.0988) upstream to endpoint(s) in: Bear Creek (40.3942, -124.0262); Bridge Creek (40.4278, -123.9317); Chadd Creek (40.3919, -123.9540); Darnell Creek (40.4533, -123.9808); Dinner Creek (40.4406, -124.0855); Greenlow Creek (40.4315, -124.0231); Jordan Creek (40.4171, -124.0517); Kiler Creek (40.4465, -124.0952); Monument Creek (40.4371, -124.1165); Shively Creek (40.4454, -123.9539); South Fork Bear Creek (40.3856, -124.0182); Stitz Creek (40.4649, -124.0531); Twin Creek (40.4419, -124.0714); Unnamed Tributary (40.3933, -123.9984); Weber Creek (40.3767, -123.9094).

(iii) *Larabee Creek Hydrologic Sub-area 111113*. Outlet(s) = Larabee Creek (Lat 40.4090, Long -123.9334) upstream to endpoint(s) in: Arnold Creek (40.4006, -123.8583); Balcom Creek (40.4030, -123.8986); Bosworth Creek (40.3584, -123.7089); Boulder Flat Creek (40.3530, -123.6381); Burr Creek (40.4250, -123.7767); Carson Creek

(40.4181, -123.8879); Chris Creek (40.4146, -123.9235); Cooper Creek (40.3123, -123.6463); Dauphny Creek (40.4049, -123.8893); Frost Creek (40.3765, -123.7357); Hayfield Creek (40.3350, -123.6535); Knack Creek (40.3788, -123.7385); Larabee Creek (40.2807, -123.6445); Martin Creek (40.3730, -123.7060); Maxwell Creek (40.3959, -123.8049); McMahan Creek (40.3269, -123.6363); Mill Creek (40.3849, -123.7440); Mountain Creek (40.2955, -123.6378); Scott Creek (40.4020, -123.8738); Smith Creek (40.4194, -123.8568); Thurman Creek (40.3506, -123.6669); Unnamed Tributary (40.3842, -123.8062); Unnamed Tributary (40.3982, -123.7862); Unnamed Tributary (40.3806, -123.7564); Unnamed Tributary (40.3661, -123.7398); Unnamed Tributary (40.3524, -123.7330).

(iv) *Hydesville Hydrologic Sub-area 111121*. Outlet(s) = Van Duzen River (Lat 40.5337, Long -124.1262) upstream to endpoint(s) in: Cuddeback Creek (40.5421, -124.0263); Cummings Creek (40.5282, -123.9770); Fiedler Creek (40.5351, -124.0106); Hely Creek (40.5165, -123.9531); Yager Creek (40.5583, -124.0577); Unnamed Tributary (40.5718, -124.0946).

(v) *Bridgeville Hydrologic Sub-area 111122*. Outlet(s) = Van Duzen River (Lat 40.4942, Long -123.9720) upstream to endpoint(s) in: Bear Creek (40.3455, -123.5763); Blanket Creek (40.3635, -123.5710); Browns Creek (40.4958, -123.8103); Butte Creek (40.4119, -123.7047); Dairy Creek (40.4174, -123.5981); Fish Creek (40.4525, -123.8434); Grizzly Creek (40.5193, -123.8470); Little Larabee Creek (40.4708, -123.7395); Little Van Duzen River (40.3021, -123.5540); North Fork Van Duzen (40.4881, -123.6411); Panther Creek (40.3921, -123.5866); Root Creek (40.4490, -123.9018); Stevens Creek (40.5062, -123.9073); Thompson Creek (40.4222, -123.6084); Van Duzen River (40.4820, -123.6629); Unnamed Tributary (40.3074, -123.5834).

(vi) *Yager Creek Hydrologic Sub-area 111123*. Outlet(s) = Yager Creek (Lat 40.5583, Long -124.0577) upstream to endpoint(s) in: Bell Creek (40.6809, -123.9685); Blanten Creek (40.5839, -124.0165); Booths Run (40.6584, -123.9428); Corner Creek (40.6179, -124.0010); Fish Creek (40.6390, -124.0024); Lawrence Creek (40.6986, -123.9314); Middle Fork Yager Creek (40.5782, -123.9243); North Fork Yager Creek (40.6056, -123.9080); Shaw Creek (40.6231, -123.9509); South Fork Yager Creek (40.5451, -123.9409); Unnamed

Tributary (40.5892, -123.9663); Yager Creek (40.5673, -123.9403).

(vii) *Weott Hydrologic Sub-area 111131*. Outlet(s) = South Fork Eel River (Lat 40.3500, Long -123.9305) upstream to endpoint(s) in: Albee Creek (40.3592, -124.0088); Bull Creek (40.3587, -123.9624); Burns Creek (40.3194, -124.0420); Butte Creek (40.1982, -123.8387); Canoe Creek (40.2669, -123.9556); Coon Creek (40.2702, -123.9013); Cow Creek (40.2664, -123.9838); Cuneo Creek (40.3401, -124.0494); Decker Creek (40.3312, -123.9501); Elk Creek (40.2609, -123.7957); Fish Creek (40.2459, -123.7729); Harper Creek (40.3591, -123.9930); Mill Creek (40.3568, -124.0333); Mowry Creek (40.2937, -123.8895); North Fork Cuneo Creek (40.3443, -124.0488); Ohman Creek (40.1924, -123.7648); Panther Creek (40.2775, -124.0289); Preacher Gulch (40.2944, -124.0047); Salmon Creek (40.2145, -123.8926); Slide Creek (40.3011, -124.0390); South Fork Salmon Creek (40.1769, -123.8929); Squaw Creek (40.3167, -123.9988); Unnamed Tributary (40.3065, -124.0074); Unnamed Tributary (40.2831, -124.0359).

(viii) *Benbow Hydrologic Sub-area 111132*. Outlet(s) = South Fork Eel River (Lat 40.1929, Long -123.7692) upstream to endpoint(s) in: Anderson Creek (39.9325, -123.8928); Bear Creek (39.7885, -123.7620); Bear Pen Creek (39.9201, -123.7986); Bear Wallow Creek (39.7270, -123.7140); Big Dan Creek (39.8430, -123.6992); Bond Creek (39.7778, -123.7060); Bridges Creek (39.9087, -123.7142); Buck Mountain Creek (40.0944, -123.7423); Butler Creek (39.7423, -123.6987); Cedar Creek (39.8834, -123.6216); China Creek (40.1035, -123.9493); Connick Creek (40.0912, -123.8154); Cox Creek (40.0310, -123.8398); Cruso Cabin Creek (39.9281, -123.5842); Durphy Creek (40.0205, -123.8271); East Branch South Fork Eel River (39.9359, -123.6204); Elkhorn Creek (39.9272, -123.6279); Fish Creek (40.0390, -123.7630); Hartsook Creek (40.0081, -123.8113); Hollow Tree Creek (39.7250, -123.6924); Huckleberry Creek (39.7292, -123.7275); Indian Creek (39.9556, -123.9172); Islam John Creek (39.8062, -123.7363); Jones Creek (39.9958, -123.8374); Leggett Creek (40.1470, -123.8375); Little Sproul Creek (40.0890, -123.8577); Lost Man Creek (39.7983, -123.7287); Low Gap Creek (39.8029, -123.6803); Low Gap Creek (39.9933, -123.7601); McCoy Creek (39.9572, -123.7369); Michael's Creek (39.7665, -123.7035); Middle Creek (39.8052, -123.7691); Milk Ranch Creek (40.0102, -123.7514); Mill Creek

(39.8673, -123.7605); Miller Creek (40.1319, -123.9302); Moody Creek (39.9471, -123.8827); Mule Creek (39.8169, -123.7745); North Fork Cedar Creek (39.8864, -123.6363); North Fork McCoy Creek (39.9723, -123.7496); Piercy Creek (39.9597, -123.8442); Pollock Creek (40.0802, -123.9341); Red Mountain Creek (39.9363, -123.7203); Redwood Creek (39.7723, -123.7648); Redwood Creek (40.0974, -123.9104); Rock Creek (39.8962, -123.7065); Sebbas Creek (39.9934, -123.8903); Somerville Creek (40.1006, -123.8884); South Fork Mule Creek (39.8174, -123.7788); South Fork Redwood Creek (39.7662, -123.7579); Sproul Creek (40.0226, -123.8649); Squaw Creek (40.0760, -123.7257); Standly Creek (39.9327, -123.8309); Tom Long Creek (40.0175, -123.6551); Waldron Creek (39.7469, -123.7465); Walter's Creek (39.7921, -123.7250); Warden Creek (40.0629, -123.8551); West Fork Sproul Creek (40.0587, -123.9170); Wildcat Creek (39.8956, -123.7820); Unnamed Tributary (39.9927, -123.8807).

(ix) *Laytonville Hydrologic Sub-area 111133*. Outlet(s) = South Fork Eel River (Lat 39.7665, Long -123.6484) upstream to endpoint(s) in: Bear Creek (39.6418, -123.5853); Big Rick Creek (39.7117, -123.5512); Cahto Creek (39.6527, -123.5579); Dark Canyon Creek (39.7333, -123.6614); Dutch Charlie Creek (39.6843, -123.7023); Elder Creek (39.7234, -123.6192); Fox Creek (39.7441, -123.6142); Grub Creek (39.7777, -123.5809); Jack of Hearts Creek (39.7136, -123.6896); Kenny Creek (39.6838, -123.5929); Little Case Creek (39.6892, -123.5441); Mill Creek (39.6839, -123.5118); Mud Creek (39.6713, -123.5741); Mud Springs Creek (39.6929, -123.5629); Redwood Creek (39.6545, -123.6753); Rock Creek (39.6922, -123.6090); Section Four Creek (39.6137, -123.5297); South Fork Eel River (39.6242, -123.5468); Streeter Creek (39.7340, -123.5606); Ten Mile Creek (39.6652, -123.4486); Unnamed Tributary (39.7004, -123.5678).

(x) *Sequoia Hydrologic Sub-area 111141*. Outlet(s) = Eel River (Lat 40.3557, Long -123.9191) upstream to endpoint(s) in: Beatty Creek (40.3198, -123.7500); Brock Creek (40.2410, -123.7246); Cameron Creek (40.3313, -123.7707); Dobbyn Creek (40.2216, -123.6029); Kapple Creek (40.3531, -123.8585); Line Gulch Creek (40.1640, -123.4783); Mud Creek (40.2078, -123.5143); North Fork Dobbyn Creek (40.2669, -123.5467); Sonoma Creek (40.2974, -123.7953); South Fork Dobbyn Creek (40.1723, -123.5112); South Fork Eel River (40.3500, -123.9305); South Fork Thompson Creek (40.3447, -123.8334); Thompson

Creek (40.3552, -123.8417); Unnamed Tributary (40.2745, -123.5487).

(xi) *Spy Rock Hydrologic Sub-area 111142*. Outlet(s) = Eel River (Lat 40.1736, Long -123.6043) upstream to endpoint(s) in: Bear Pen Canyon (39.6943, -123.4359); Bell Springs Creek (39.9457, -123.5313); Blue Rock Creek (39.8937, -123.5018); Burger Creek (39.6693, -123.4034); Chamise Creek (40.0035, -123.5945); Gill Creek (39.7879, -123.3465); Iron Creek (39.7993, -123.4747); Jewett Creek (40.1122, -123.6171); Kekawaka Creek (40.0686, -123.4087); Rock Creek (39.9347, -123.5187); Shell Rock Creek (39.8414, -123.4614); Unnamed Tributary (39.7579, -123.4709); White Rock Creek (39.7646, -123.4684); Woodman Creek (39.7612, -123.4364).

(xii) *Outlet Creek Hydrologic Sub-area 111161*. Outlet(s) = Outlet Creek (Lat 39.6265, Long -123.3449) upstream to endpoint(s) in: Baechtel Creek (39.3623, -123.4143); Berry Creek (39.4271, -123.2777); Bloody Run Creek (39.5864, -123.3545); Broaddus Creek (39.3869, -123.4282); Cherry Creek (39.6043, -123.4073); Conklin Creek (39.3756, -123.2570); Davis Creek (39.3354, -123.2945); Haehl Creek (39.3735, -123.3172); Long Valley Creek (39.6246, -123.4651); Mill Creek (39.4196, -123.3919); Outlet Creek (39.4526, -123.3338); Ryan Creek (39.4804, -123.3644); Unnamed Tributary (39.4956, -123.3591); Unnamed Tributary (39.4322, -123.3848); Unnamed Tributary (39.5793, -123.4546); Unnamed Tributary (39.3703, -123.3419); Upp Creek (39.4479, -123.3825); Willits Creek (39.4686, -123.4299).

(xiii) *Tomki Creek Hydrologic Sub-area 111162*. Outlet(s) = Eel River (Lat 39.7138, Long -123.3532) upstream to endpoint(s) in: Cave Creek (39.3842, -123.2148); Dean Creek (39.6924, -123.3727); Garcia Creek (39.5153, -123.1512); Little Cave Creek (39.3915, -123.2462); Little Creek (39.4146, -123.2595); Long Branch Creek (39.4074, -123.1897); Rocktree Creek (39.4534, -123.3053); Salmon Creek (39.4367, -123.1939); Scott Creek (39.4492, -123.2286); String Creek (39.4658, -123.3206); Tarter Creek (39.4715, -123.2976); Thomas Creek (39.4768, -123.1230); Tomki Creek (39.5483, -123.3687); Whitney Creek (39.4399, -123.1084); Wheelbarrow Creek (39.5012, -123.3304).

(xiv) *Eden Valley Hydrologic Sub-area 111171*. Outlet(s) = Middle Fork Eel River (Lat 39.7138, Long -123.3532) upstream to endpoint(s) in: Crocker Creek (39.5559, -123.0409); Eden Creek (39.5992, -123.1746); Elk Creek (39.5371, -123.0101); Hayshed Creek

(39.7082, -123.0967); Salt Creek (39.6765, -123.2740); Sportsmans Creek (39.5373, -123.0247); Sulper Springs (39.5536, -123.0365); Thatcher Creek (39.6686, -123.0639).

(xv) *Round Valley Hydrologic Sub-area 111172*. Outlet(s) = Mill Creek (Lat 39.7396, Long -123.1420); Williams Creek (39.8145, -123.1333) upstream to endpoint(s) in: Cold Creek (39.8714, -123.2991); Grist Creek (39.7640, -123.2883); Mill Creek (39.8481, -123.2896); Murphy Creek (39.8885, -123.1612); Short Creek (39.8703, -123.2352); Town Creek (39.7991, -123.2889); Turner Creek (39.7218, -123.2175); Williams Creek (39.8903, -123.1212); Unnamed Tributary (39.7428, -123.2757); Unnamed Tributary (39.7493, -123.2584).

(xvi) *Black Butte River Hydrologic Sub-area 111173*. Outlet(s) = Black Butte River (Lat 39.8239, Long -123.0880) upstream to endpoint(s) in: Black Butte River (39.5946, -122.8579); Buckhorn Creek (39.6563, -122.9225); Cold Creek (39.6960, -122.9063); Estell Creek (39.5966, -122.8224); Spanish Creek (39.6287, -122.8331).

(xvii) *Wilderness Hydrologic Sub-area 111174*. Outlet(s) = Middle Fork Eel River (Lat 39.8240, Long -123.0877) upstream to endpoint(s) in: Beaver Creek (39.9352, -122.9943); Fossil Creek (39.9447, -123.0403); Middle Fork Eel River (40.0780, -123.0442); North Fork Middle Fork Eel River (40.0727, -123.1364); Palm of Gileade Creek (40.0229, -123.0647); Pothole Creek (39.9347, -123.0440).

(6) Cape Mendocino Hydrologic Unit 1112—(i) *Oil Creek Hydrologic Sub-area 111210*. Outlet(s) = Guthrie Creek (Lat 40.5407, Long -124.3626); Oil Creek (40.5195, -124.3767) upstream to endpoint(s) in: Guthrie Creek (40.5320, -124.3128); Oil Creek (40.5061, -124.2875); Unnamed Tributary (40.4946, -124.3091); Unnamed Tributary (40.4982, -124.3549); Unnamed Tributary (40.5141, -124.3573); Unnamed Tributary (40.4992, -124.3070).

(ii) *Capetown Hydrologic Sub-area 111220*. Outlet(s) = Bear River (Lat 40.4744, Long -124.3881); Davis Creek (40.3850, -124.3691); Singley Creek (40.4311, -124.4034) upstream to endpoint(s) in: Antone Creek (40.4281, -124.2114); Bear River (40.3591, -124.0536); Beer Bottle Gulch (40.3949, -124.1410); Bonanza Gulch (40.4777, -124.2966); Brushy Creek (40.4102, -124.1050); Davis Creek (40.3945, -124.2912); Harmonica Creek (40.3775, -124.0735); Hollister Creek (40.4109, -124.2891); Nelson Creek (40.3536, -124.1154); Peaked Creek (40.4123, -124.1897); Pullen Creek (40.4057,

-124.0814); Singley Creek (40.4177, -124.3305); South Fork Bear River (40.4047, -124.2631); Unnamed Tributary (40.4271, -124.3107); Unnamed Tributary (40.4814, -124.2741); Unnamed Tributary (40.3633, -124.0651); Unnamed Tributary (40.3785, -124.0599); Unnamed Tributary (40.4179, -124.2391); Unnamed Tributary (40.4040, -124.0923); Unnamed Tributary (40.3996, -124.3175); Unnamed Tributary (40.4045, -124.0745); Unnamed Tributary (40.4668, -124.2364); Unnamed Tributary (40.4389, -124.2350); Unnamed Tributary (40.4516, -124.2238); Unnamed Tributary (40.4136, -124.1594); Unnamed Tributary (40.4350, -124.1504); Unnamed Tributary (40.4394, -124.3745); West Side Creek (40.4751, -124.2432).

(iii) *Mattole River Hydrologic Sub-area 111230*. Outlet(s) = Big Creek (Lat 40.1567, Long -124.2114); Big Flat Creek (40.1275, -124.1764); Buck Creek (40.1086, -124.1218); Cooskie Creek (40.2192, -124.3105); Fourmile Creek (40.2561, -124.3578); Gitchell Creek (40.0938, -124.1023); Horse Mountain Creek (40.0685, -124.0822); Kinsey Creek (40.1717, -124.2310); Mattole River (40.2942, -124.3536); McNutt Gulch (40.3541, -124.3619); Oat Creek (40.1785, -124.2445); Randall Creek (40.2004, -124.2831); Shipman Creek (40.1175, -124.1449); Spanish Creek (40.1835, -124.2569); Telegraph Creek (40.0473, -124.0798); Whale Gulch (39.9623, -123.9785) upstream to endpoint(s) in: Anderson Creek (40.0329, -123.9674); Baker Creek (40.0143, -123.9048); Bear Creek (40.1262, -124.0631); Bear Creek (40.2819, -124.3336); Bear Trap Creek (40.2157, -124.1422); Big Creek (40.1742, -124.1924); Big Finley Creek (40.0910, -124.0179); Big Flat Creek (40.1444, -124.1636); Blue Slide Creek (40.1562, -123.9283); Box Canyon Creek (40.1078, -123.9854); Bridge Creek (40.0447, -124.0118); Buck Creek (40.1166, -124.1142); Conklin Creek (40.3197, -124.2055); Cooskie Creek (40.2286, -124.2986); Devils Creek (40.3432, -124.1365); Dry Creek (40.2646, -124.0660); East Branch North Fork Mattole River (40.3333, -124.1490); East Fork Honeydew Creek (40.1625, -124.0929); Eubank Creek (40.0997, -123.9661); Fire Creek (40.1533, -123.9509); Fourmile Creek (40.2604, -124.3079); Fourmile Creek (40.1767, -124.0759); French Creek (40.1384, -124.0072); Gibson Creek (40.0304, -123.9279); Gilham Creek (40.2078, -124.0085); Gitchell Creek

(40.1086, -124.0947); Green Ridge Creek (40.3254, -124.1258); Grindstone Creek (40.2019, -123.9890); Harris Creek (40.0381, -123.9304); Harrow Creek (40.1612, -124.0292); Helen Barnum Creek (40.0036, -123.9101); Honeydew Creek (40.1747, -124.1410); Horse Mountain Creek (40.0769, -124.0729); Indian Creek (40.2772, -124.2759); Jewett Creek (40.1465, -124.0414); Kinsey Creek (40.1765, -124.2220); Lost Man Creek (39.9754, -123.9179); Mattole Canyon (40.2021, -123.9570); Mattole River (39.9714, -123.9623); McGinnis Creek (40.3186, -124.1801); McKee Creek (40.0864, -123.9480); McNutt Gulch (40.3458, -124.3418); Middle Creek (40.2591, -124.0366); Mill Creek (40.0158, -123.9693); Mill Creek (40.3305, -124.2598); Mill Creek (40.2839, -124.2946); Nooning Creek (40.0616, -124.0050); North Fork Mattole River (40.3866, -124.1867); North Fork Bear Creek (40.1494, -124.1060); North Fork Fourmile Creek (40.2019, -124.0722); Oat Creek (40.1884, -124.2296); Oil Creek (40.3214, -124.1601); Painter Creek (40.0844, -123.9639); Prichett Creek (40.2892, -124.1704); Randall Creek (40.2092, -124.2668); Rattlesnake Creek (40.3250, -124.0981); Shipman Creek (40.1250, -124.1384); Sholes Creek (40.1603, -124.0619); South Branch West Fork Bridge Creek (40.0326, -123.9853); South Fork Bear Creek (40.0176, -124.0016); Spanish Creek (40.1965, -124.2429); Squaw Creek (40.1934, -124.2002); Stanley Creek (40.0273, -123.9166); Sulphur Creek (40.3647, -124.1586); Telegraph Creek (40.0439, -124.0640); Thompson Creek (39.9913, -123.9707); Unnamed Tributary (40.3475, -124.1606); Unnamed Tributary (40.3522, -124.1533); Unnamed Tributary (40.0891, -123.9839); Unnamed Tributary (40.2223, -124.0172); Unnamed Tributary (40.1733, -123.9515); Unnamed Tributary (40.2899, -124.0955); Unnamed Tributary (40.2853, -124.3227); Unnamed Tributary (39.9969, -123.9071); Upper East Fork Honeydew Creek (40.1759, -124.1182); Upper North Fork Mattole River (40.2907, -124.1115); Vanauken Creek (40.0674, -123.9422); West Fork Bridge Creek (40.0343, -123.9990); West Fork Honeydew Creek (40.1870, -124.1614); Westlund Creek (40.2440, -124.0036); Whale Gulch (39.9747, -123.9812); Woods Creek (40.2119, -124.1611); Yew Creek (40.0018, -123.9762).

(7) Mendocino Coast Hydrologic Unit 1113—(i) *Usal Creek Hydrologic Sub-area 111311*. Outlet(s) = Jackass Creek (Lat 39.8806, Long -123.9155); Usal

Creek (39.8316, -123.8507) upstream to endpoint(s) in: Bear Creek (39.8898, -123.8344); Jackass Creek (39.8901, -123.8928); Julius Creek (39.8542, -123.7937); Little Bear Creek (39.8629, -123.8400); North Fork Jackass Creek (39.9095, -123.9101); North Fork Julius Creek (39.8581, -123.8045); Soldier Creek (39.8679, -123.8162); South Fork Usal Creek (39.8356, -123.7865); Unnamed Tributary (39.8890, -123.8480); Usal Creek (39.8957, -123.8797); Waterfall Gulch (39.8787, -123.8680).

(ii) *Wages Creek Hydrologic Sub-area 111312*. Outlet(s) = Cottaneva Creek (Lat 39.7360, Long -123.8293); DeHaven Creek (39.6592, -123.7863); Hardy Creek (39.7107, -123.8082); Howard Creek (39.6778, -123.7915); Juan Creek (39.7028, -123.8042); Wages Creek (39.6513, -123.7851) upstream to endpoint(s) in: Cottaneva Creek (39.7825, -123.8210); DeHaven Creek (39.6687, -123.7060); Dunn Creek (39.8103, -123.8320); Hardy Creek (39.7221, -123.7822); Howard Creek (39.6808, -123.7463); Juan Creek (39.7107, -123.7472); Kimball Gulch (39.7559, -123.7828); Little Juan Creek (39.7003, -123.7609); Middle Fork Cottaneva Creek (39.7738, -123.8058); North Fork Cottaneva Creek (39.8011, -123.8047); North Fork DeHaven Creek (39.6660, -123.7382); North Fork Wages Creek (39.6457, -123.7066); Rider Gulch (39.6348, -123.7621); Rockport Creek (39.7346, -123.8021); Slaughterhouse Gulch (39.7594, -123.7914); South Fork Cottaneva Creek (39.7447, -123.7773); South Fork Wages Creek (39.6297, -123.6862); Wages Creek (39.6297, -123.6862).

(iii) *Ten Mile River Hydrologic Sub-area 111313*. Outlet(s) = Abalobadiah Creek (Lat 39.5654, Long -123.7672); Chadbourne Gulch (39.6133, -123.7822); Ten Mile River (39.5529, -123.7658); Seaside Creek (39.5592, -123.7655) upstream to endpoint(s) in: Abalobadiah Creek (39.5878, -123.7503); Bald Hill Creek (39.6278, -123.6461); Barlow Gulch (39.6046, -123.7384); Bear Pen Creek (39.5824, -123.6402); Booth Gulch (39.5567, -123.5918); Buckhorn Creek (39.6093, -123.6980); Campbell Creek (39.5053, -123.6610); Cavanaugh Gulch (39.6107, -123.6776); Chadbourne Gulch (39.6190, -123.7682); Clark Fork (39.5280, -123.5134); Curchman Creek (39.4789, -123.6398); Gulch 11 (39.4687, -123.5816); Gulch 19 (39.5939, -123.5781); Little Bear Haven Creek (39.5655, -123.6147); Little North Fork (39.6264, -123.7350); Mill Creek (39.5392, -123.7068); North Fork Ten Mile River (39.5870, -123.5480); O'Conner Gulch (39.6042, -123.6632);

Patsy Creek (39.5714, -123.5669); Redwood Creek (39.5142, -123.5620); Seaside Creek (39.5612, -123.7501); Smith Creek (39.5251, -123.6499); South Fork Bear Haven Creek (39.5688, -123.6527); South Fork Ten Mile River (39.5083, -123.5395); Ten Mile River (39.5721, -123.7098); Unnamed Tributary (39.5180, -123.5948); Unnamed Tributary (39.5146, -123.6183); Unnamed Tributary (39.5898, -123.7657); Unnamed Tributary (39.5813, -123.7526); Unnamed Tributary (39.5936, -123.6034).

(iv) *Noyo River Hydrologic Sub-area 111320*. Outlet(s) = Digger Creek (Lat 39.4088, Long -123.8164); Hare Creek (39.4171, -123.8128); Jug Handle Creek (39.3767, -123.8176); Mill Creek (39.4894, -123.7967); Mitchell Creek (39.3923, -123.8165); Noyo River (39.4274, -123.8096); Pudding Creek (39.4588, -123.8089); Virgin Creek (39.4714, -123.8045) upstream to endpoint(s) in: Bear Gulch (39.3881, -123.6614); Brandon Gulch (39.4191, -123.6645); Bunker Gulch (39.3969, -123.7153); Burbeck Creek (39.4354, -123.4235); Covington Gulch (39.4099, -123.7546); Dewarren Creek (39.4974, -123.5535); Digger Creek (39.3932, -123.7820); Duffy Gulch (39.4469, -123.6023); Gulch Creek (39.4441, -123.4684); Gulch Seven (39.4523, -123.5183); Hare Creek (39.3781, -123.6922); Hayworth Creek (39.4857, -123.4769); Hayshed Creek (39.4200, -123.7391); Jug Handle Creek (39.3647, -123.7523); Kass Creek (39.4262, -123.6807); Little North Fork (39.4532, -123.6636); Little Valley Creek (39.5026, -123.7277); Marble Gulch (39.4423, -123.5479); McMullen Creek (39.4383, -123.4488); Middle Fork North Fork (39.4924, -123.5231); Mill Creek (39.4813, -123.7600); Mitchell Creek (39.3813, -123.7734); North Fork Hayworth Creek (39.4891, -123.5026); North Fork Noyo River (39.4765, -123.5535); North Fork Noyo (39.4765, -123.5535); North Fork South Fork Noyo River (39.3971, -123.6108); Noyo River (39.4242, -123.4356); Olds Creek (39.3964, -123.4448); Parlin Creek (39.3700, -123.6111); Pudding Creek (39.4591, -123.6516); Redwood Creek (39.4660, -123.4571); South Fork Hare Creek (39.3785, -123.7384); South Fork Noyo River (39.3620, -123.6188); Unnamed Tributary (39.4113, -123.5621); Unnamed Tributary (39.3918, -123.6425); Unnamed Tributary (39.4168, -123.4578); Unnamed Tributary (39.4656, -123.7467); Unnamed Tributary (39.4931, -123.7371); Unnamed Tributary (39.4922, -123.7381);

Unnamed Tributary (39.4939, -123.7184); Unnamed Tributary (39.4158, -123.6428); Unnamed Tributary (39.4002, -123.7347); Unnamed Tributary (39.3831, -123.6177); Unnamed Tributary (39.4926, -123.4764); Virgin Creek (39.4621, -123.7855); Unnamed Tributary (39.4650, -123.7463).

(v) *Big River Hydrologic Sub-area 111330*. Outlet(s) = Big River (Lat 39.3030, Long -123.7957); Casper Creek (39.3617, -123.8169); Doyle Creek (39.3603, -123.8187); Jack Peters Creek (39.3193, -123.8006); Russian Gulch (39.3288, -123.8050) upstream to endpoint(s) in: Berry Gulch (39.3585, -123.6930); Big River (39.3166, -123.3733); Casper Creek (39.3462, -123.7556); Chamberlain Creek (39.4007, -123.5317); Daugherty Creek (39.1700, -123.3699); Doyle Creek (39.3517, -123.8007); East Branch Little North Fork Big River (39.3372, -123.6410); East Branch North Fork Big River (39.3354, -123.4652); Gates Creek (39.2083, -123.3944); Jack Peters Gulch (39.3225, -123.7850); James Creek (39.3922, -123.4747); Johnson Creek (39.1963, -123.3927); Johnson Creek (39.2556, -123.4485); Laguna Creek (39.2910, -123.6334); Little North Fork Big River (39.3497, -123.6242); Marten Creek (39.3290, -123.4279); Mettick Creek (39.2591, -123.5193); Middle Fork North Fork Casper Creek (39.3575, -123.7170); North Fork Big River (39.3762, -123.4591); North Fork Casper Creek (39.3610, -123.7356); North Fork James Creek (39.3980, -123.4939); North Fork Ramone Creek (39.2760, -123.4846); Pig Pen Gulch (39.3226, -123.4609); Pruitt Creek (39.2592, -123.3812); Ramone Creek (39.2714, -123.4415); Rice Creek (39.2809, -123.3963); Russell Brook (39.2863, -123.4461); Russian Gulch (39.3237, -123.7650); Snuffins Creek (39.1836, -123.3854); Soda Creek (39.2230, -123.4239); South Fork Big River (39.2317, -123.3687); South Fork Casper Creek (39.3493, -123.7216); Two Log Creek (39.3484, -123.5781); Unnamed Tributary (39.3897, -123.5556); Unnamed Tributary (39.3637, -123.5464); Unnamed Tributary (39.3776, -123.5274); Unnamed Tributary (39.4029, -123.5771); Valentine Creek (39.2694, -123.3957); Water Gulch (39.3607, -123.5891).

(vi) *Albion River Hydrologic Sub-area 111340*. Outlet(s) = Albion River (Lat 39.2253, Long -123.7679); Big Salmon Creek (39.2150, -123.7660); Buckhorn Creek (39.2593, -123.7839); Dark Gulch (39.2397, -123.7740); Little Salmon Creek (39.2150, -123.7660); Little River (39.2734, -123.7914) upstream to endpoint(s) in: Albion River (39.2613,

–123.5766); Big Salmon Creek (39.2070, –123.6514); Buckhorn Creek (39.2513, –123.7595); Dark Gulch (39.2379, –123.7592); Duck Pond Gulch (39.2456, –123.6960); East Railroad Gulch (39.2604, –123.6381); Hazel Gulch (39.2141, –123.6418); Kaison Gulch (39.2733, –123.6803); Little North Fork South Fork Albion River (39.2350, –123.6431); Little River (39.2683, –123.7190); Little Salmon Creek (39.2168, –123.7515); Marsh Creek (39.2325, –123.5596); Nordon Gulch (39.2489, –123.6503); North Fork Albion River (39.2854, –123.5752); Pleasant Valley Gulch (39.2379, –123.6965); Railroad Gulch (39.2182, –123.6932); Soda Springs Creek (39.2943, –123.5944); South Fork Albion River (39.2474, –123.6107); Tom Bell Creek (39.2805, –123.6519); Unnamed Tributary (39.2279, –123.6972); Unnamed Tributary (39.2194, –123.7100); Unnamed Tributary (39.2744, –123.5889); Unnamed Tributary (39.2254, –123.6733).

(vii) *Navarro River Hydrologic Sub-area 111350*. Outlet(s) = Navarro River (Lat 39.1921, Long –123.7611) upstream to endpoint(s) in: Alder Creek (38.9830, –123.3946); Anderson Creek (38.9644, –123.2907); Bailey Creek (39.1733, –123.4804); Barton Gulch (39.1804, –123.6783); Bear Creek (39.1425, –123.4326); Bear Wallow Creek (39.0053, –123.4075); Beasley Creek (38.9366, –123.3265); Bottom Creek (39.2117, –123.4607); Camp 16 Gulch (39.1937, –123.6095); Camp Creek (38.9310, –123.3527); Cold Spring Creek (39.0376, –123.5027); Con Creek (39.0374, –123.3816); Cook Creek (39.1879, –123.5109); Cune Creek (39.1622, –123.6014); Dago Creek (39.0731, –123.5068); Dead Horse Gulch (39.1576, –123.6124); Dutch Henry Creek (39.2112, –123.5794); Floodgate Creek (39.1291, –123.5365); Fluem Gulch (39.1615, –123.6695); Flynn Creek (39.2099, –123.6032); German Creek (38.9452, –123.4269); Gut Creek (39.0803, –123.3312); Ham Canyon (39.0164, –123.4265); Horse Creek (39.0144, –123.4960); Hungry Hollow Creek (39.1327, –123.4488); Indian Creek (39.0708, –123.3301); Jimmy Creek (39.0117, –123.2888); John Smith Creek (39.2275, –123.5366); Little North Fork Navarro River (39.1941, –123.4553); Low Gap Creek (39.1590, –123.3783); Navarro River (39.0537, –123.4409); Marsh Gulch (39.1692, –123.7049); McCarvey Creek (39.1589, –123.4048); Mill Creek (39.1270, –123.4315); Minnie Creek (38.9751, –123.4529); Murray Gulch (39.1755, –123.6966); Mustard Gulch (39.1673, –123.6393); North Branch (39.2069,

–123.5361); North Fork Indian Creek (39.1213, –123.3345); North Fork Navarro River (39.1708, –123.5606); Parkinson Gulch (39.0768, –123.4070); Perry Gulch (39.1342, –123.5707); Rancheria Creek (38.8626, –123.2417); Ray Gulch (39.1792, –123.6494); Robinson Creek (38.9845, –123.3513); Rose Creek (39.1358, –123.3672); Shingle Mill Creek (39.1671, –123.4223); Soda Creek (39.0238, –123.3149); Soda Creek (39.1531, –123.3734); South Branch (39.1409, –123.3196); Spooner Creek (39.2221, –123.4811); Tramway Gulch (39.1481, –123.5958); Yale Creek (38.8882, –123.2785).

(viii) *Greenwood Creek Hydrologic Sub-area 111361*. Outlet(s) = Greenwood Creek (Lat 39.1262, Long –123.7181) upstream to endpoint(s) in: Greenwood Creek (39.0894, –123.5924).

(ix) *Elk Creek Hydrologic Sub-area 111362*. Outlet(s) = Elk Creek (Lat 39.1024, Long –123.7080) upstream to endpoint(s) in: Elk Creek (39.0657, –123.6245).

(x) *Alder Creek Hydrologic Sub-area 111363*. Outlet(s) = Alder Creek (Lat 39.0044, Long –123.6969); Mallo Pass Creek (39.0341, –123.6896) upstream to endpoint(s) in: Alder Creek (38.9961, –123.6471); Mallo Pass Creek (39.0287, –123.6373).

(xi) *Brush Creek Hydrologic Sub-area 111364*. Outlet(s) = Brush Creek (Lat 38.9760, Long –123.7120) upstream to endpoint(s) in: Brush Creek (38.9730, –123.5563); Mill Creek (38.9678, –123.6515); Unnamed Tributary (38.9724, –123.6571).

(xii) *Garcia River Hydrologic Sub-area 111370*. Outlet(s) = Garcia River (Lat 38.9550, Long –123.7338); Point Arena Creek (38.9141, –123.7103); Schooner Gulch (38.8667, –123.6550) upstream to endpoint(s) in: Blue Water Hole Creek (38.9378, –123.5023); Flemming Creek (38.8384, –123.5361); Garcia River (38.8965, –123.3681); Hathaway Creek (38.9287, –123.7011); Inman Creek (38.8804, –123.4370); Larmour Creek (38.9419, –123.4469); Mill Creek (38.9078, –123.3143); North Fork Garcia River (38.9233, –123.5339); North Fork Schooner Gulch (38.8758, –123.6281); Pardaloe Creek (38.8895, –123.3423); Point Arena Creek (38.9069, –123.6838); Redwood Creek (38.9241, –123.3343); Rolling Brook (38.8965, –123.5716); Schooner Gulch (38.8677, –123.6198); South Fork Garcia River (38.8450, –123.5420); Stansburry Creek (38.9422, –123.4720); Signal Creek (38.8639, –123.4414); Unnamed Tributary (38.8758, –123.5692); Unnamed Tributary (38.8818, –123.5723); Whitlow Creek (38.9141, –123.4624).

(xiii) *North Fork Gualala River Hydrologic Sub-area 111381*. Outlet(s) = North Fork Gualala River (Lat 38.7784, Long –123.4992) upstream to endpoint(s) in: Bear Creek (38.8347, –123.3842); Billings Creek (38.8652, –123.3496); Doty Creek (38.8495, –123.5131); Dry Creek (38.8416, –123.4455); Little North Fork Gualala River (38.8295, –123.5570); McGann Gulch (38.8026, –123.4458); North Fork Gualala River (38.8479, –123.4113); Robinson Creek (38.8416, –123.3725); Robinson Creek (38.8386, –123.4991); Stewart Creek (38.8109, –123.4157); Unnamed Tributary (38.8487, –123.3820).

(xiv) *Rockpile Creek Hydrologic Sub-area 111382*. Outlet(s) = Rockpile Creek (Lat 38.7507, Long –123.4706) upstream to endpoint(s) in: Rockpile Creek (38.7966, –123.3872).

(xv) *Buckeye Creek Hydrologic Sub-area 111383*. Outlet(s) = Buckeye Creek (Lat 38.7403, Long –123.4580) upstream to endpoint(s) in: Buckeye Creek (38.7400, –123.2697); Flat Ridge Creek (38.7616, –123.2400); Franchini Creek (38.7500, –123.3708); North Fork Buckeye (38.7991, –123.3166).

(xvi) *Wheatfield Fork Hydrologic Sub-area 111384*. Outlet(s) = Wheatfield Fork Gualala River (Lat 38.7018, Long –123.4168) upstream to endpoint(s) in: Danfield Creek (38.6369, –123.1431); Fuller Creek (38.7109, –123.3256); Haupt Creek (38.6220, –123.2551); House Creek (38.6545, –123.1184); North Fork Fuller Creek (38.7252, –123.2968); Pepperwood Creek (38.6205, –123.1665); South Fork Fuller Creek (38.6973, –123.2860); Tombs Creek (38.6989, –123.1616); Unnamed Tributary (38.7175, –123.2744); Wheatfield Fork Gualala River (38.7497, –123.2215).

(xvii) *Gualala Hydrologic Sub-area 111385*. Outlet(s) = Fort Ross Creek (Lat 38.5119, Long –123.2436); Gualala River (38.7687, –123.5334); Kolmer Gulch (38.5238, –123.2646) upstream to endpoint(s) in: Big Pepperwood Creek (38.7951, –123.4638); Carson Creek (38.5653, –123.1906); Fort Ross Creek (38.5174, –123.2363); Groshong Gulch (38.7814, –123.4904); Gualala River (38.7780, –123.4991); Kolmer Gulch (38.5369, –123.2247); Little Pepperwood (38.7738, –123.4427); Marshall Creek (38.5647, –123.2058); McKenzie Creek (38.5895, –123.1730); Palmer Canyon Creek (38.6002, –123.2167); South Fork Gualala River (38.5646, –123.1689); Sproule Creek (38.6122, –123.2739); Turner Canyon (38.5294, –123.1672); Unknown Tributary (38.5634, –123.2003).

(xviii) *Russian Gulch Hydrologic Sub-area 111390*. Outlet(s) = Russian Gulch

Creek (Lat 38.4669, Long -123.1569)
upstream to endpoint(s) in: Russian
Gulch Creek (38.4956, -123.1535); West

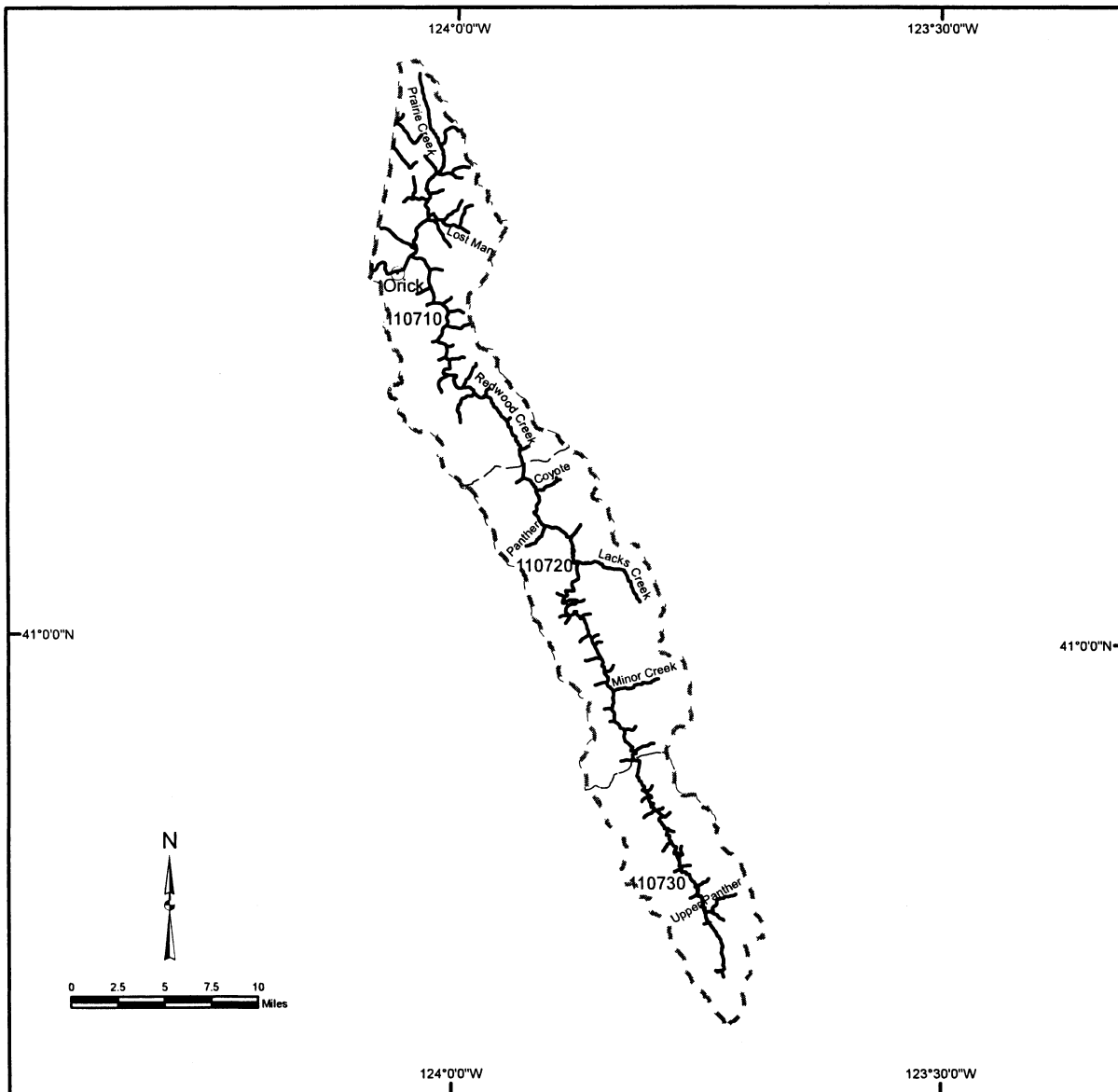
Branch Russian Gulch Creek (38.4968,
-123.1631).

(8) Maps of critical habitat for the
Northern California Steelhead ESU
follow:

BILLING CODE 3510-22-P

Critical Habitat for the Northern California Steelhead

Redwood Creek Hydrologic Unit 1107

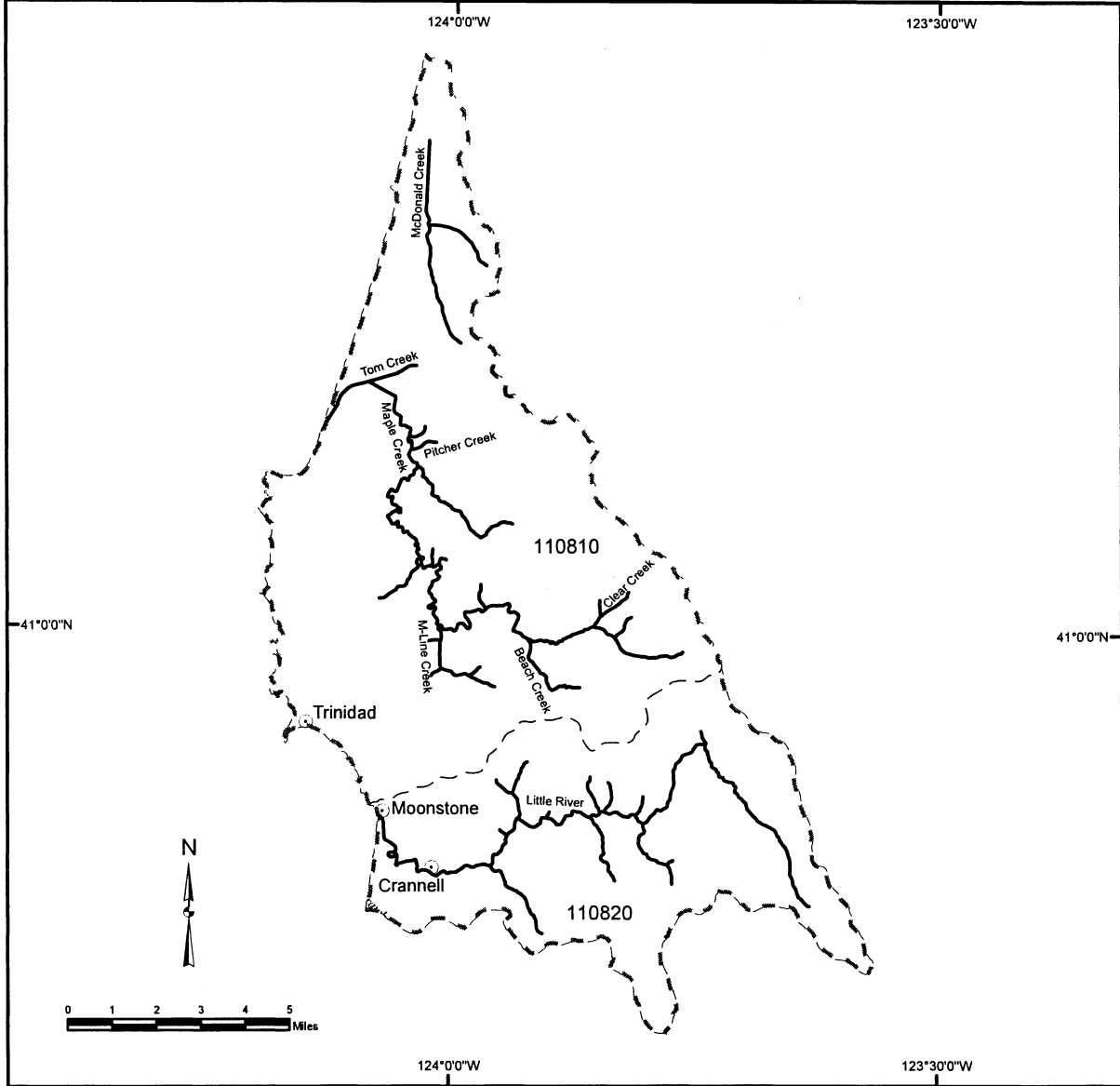


⊙ Cities/Towns
— Critical Habitat
- - - Hydrologic Unit Boundary
- - - Fifth Field Calwater Hydrologic Sub-Area Boundary
110701 Fifth Field Calwater Hydrologic Sub-Area Number



**Critical Habitat for the
Northern California Steelhead**

**Trinidad Hydrologic Unit
1108**

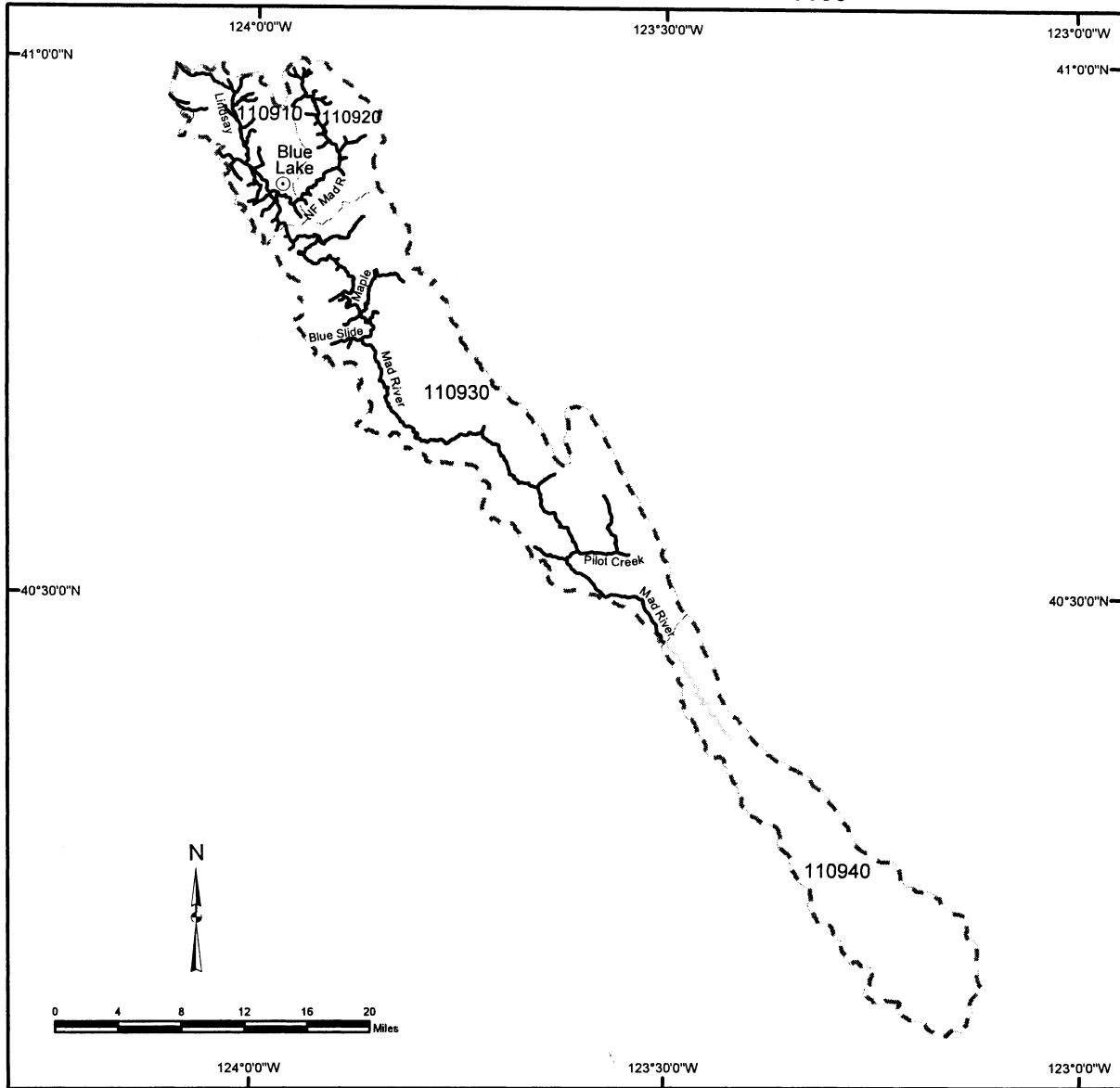


- ⊙ Cities/Towns
 - Critical Habitat
 - - - Hydrologic Unit Boundary
 - ⋯ Fifth Field Calwater Hydrologic Sub-Area Boundary
- 110701 Fifth Field Calwater Hydrologic Sub-Area Number



Critical Habitat for the Northern California Steelhead

Mad River Hydrologic Unit 1109

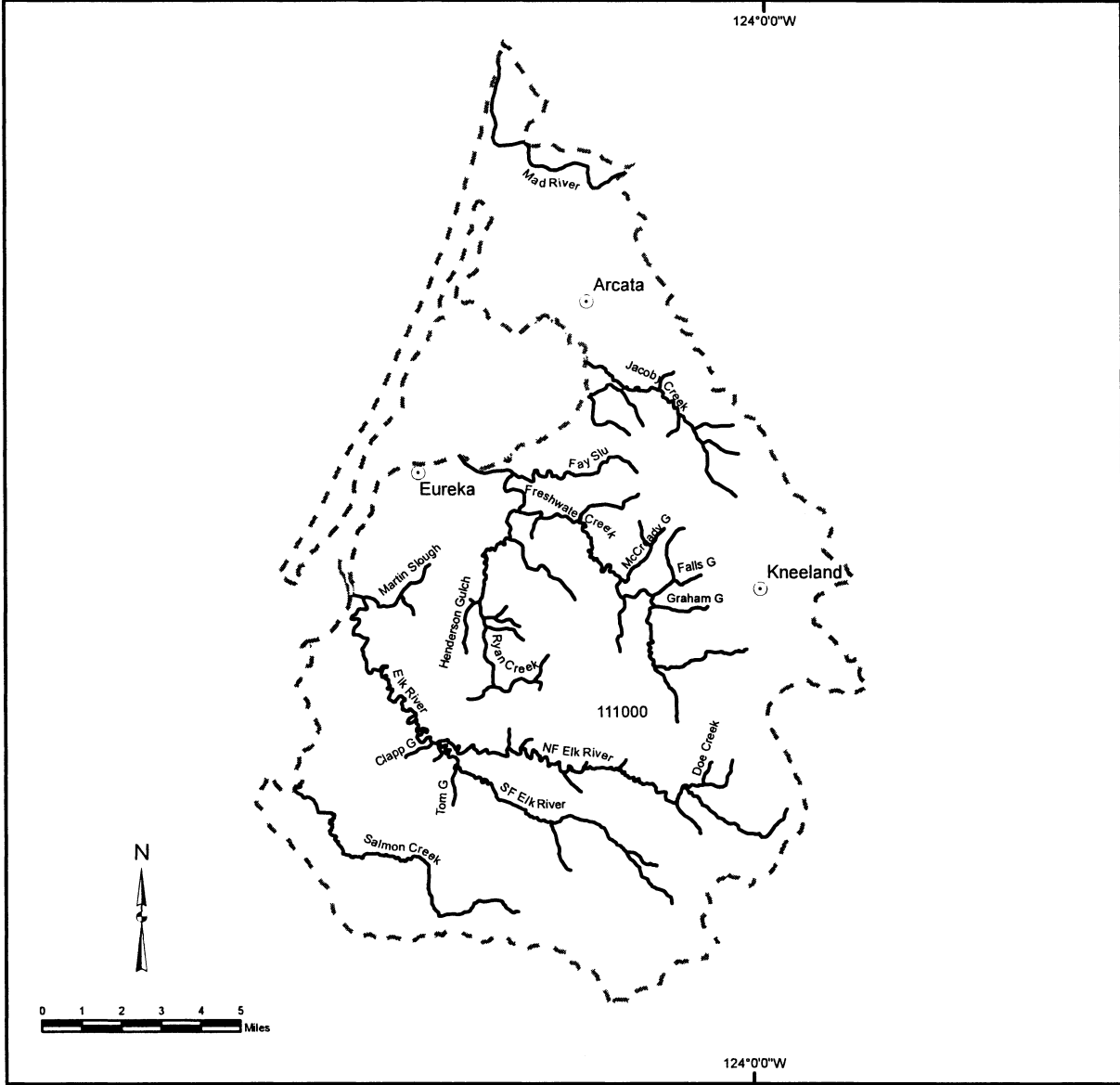


- ⊙ Cities/Towns
 - Critical Habitat
 - ⋯ Occupied but excluded streams / areas
 - - - Hydrologic Unit Boundary
 - - - Fifth Field Calwater Hydrologic Sub-Area Boundary
- 110701 Fifth Field Calwater Hydrologic Sub-Area Number



Critical Habitat for the Northern California Steelhead

Eureka Plain Hydrologic Unit 1110

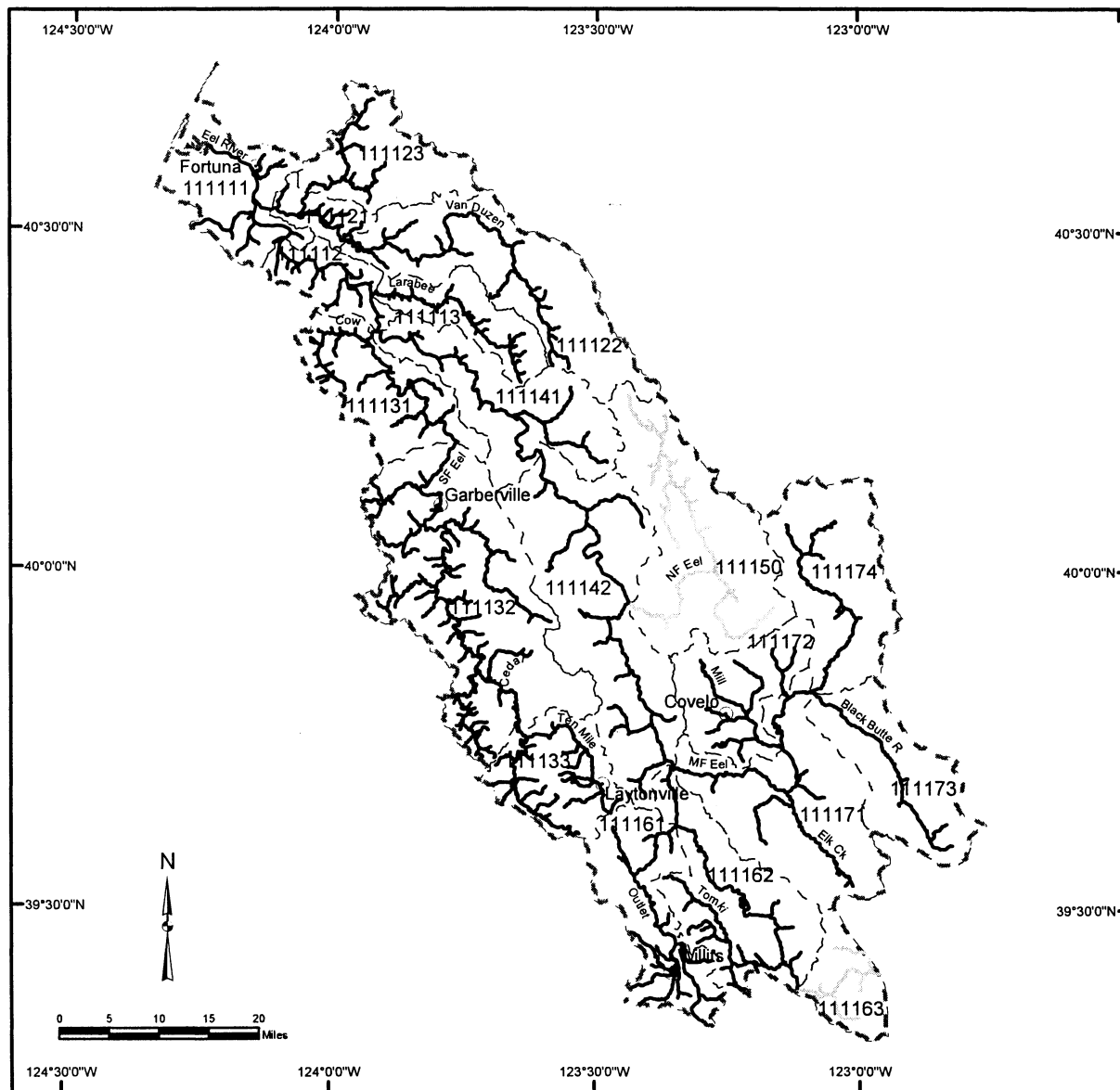


- ⊙ Cities/Towns
 - Critical Habitat
 - - - Hydrologic Unit Boundary
 - - - Fifth Field Calwater Hydrologic Sub-Area Boundary
- 110701 Fifth Field Calwater Hydrologic Sub-Area Number



Critical Habitat for the Northern California Steelhead

Eel River Hydrologic Unit 1111



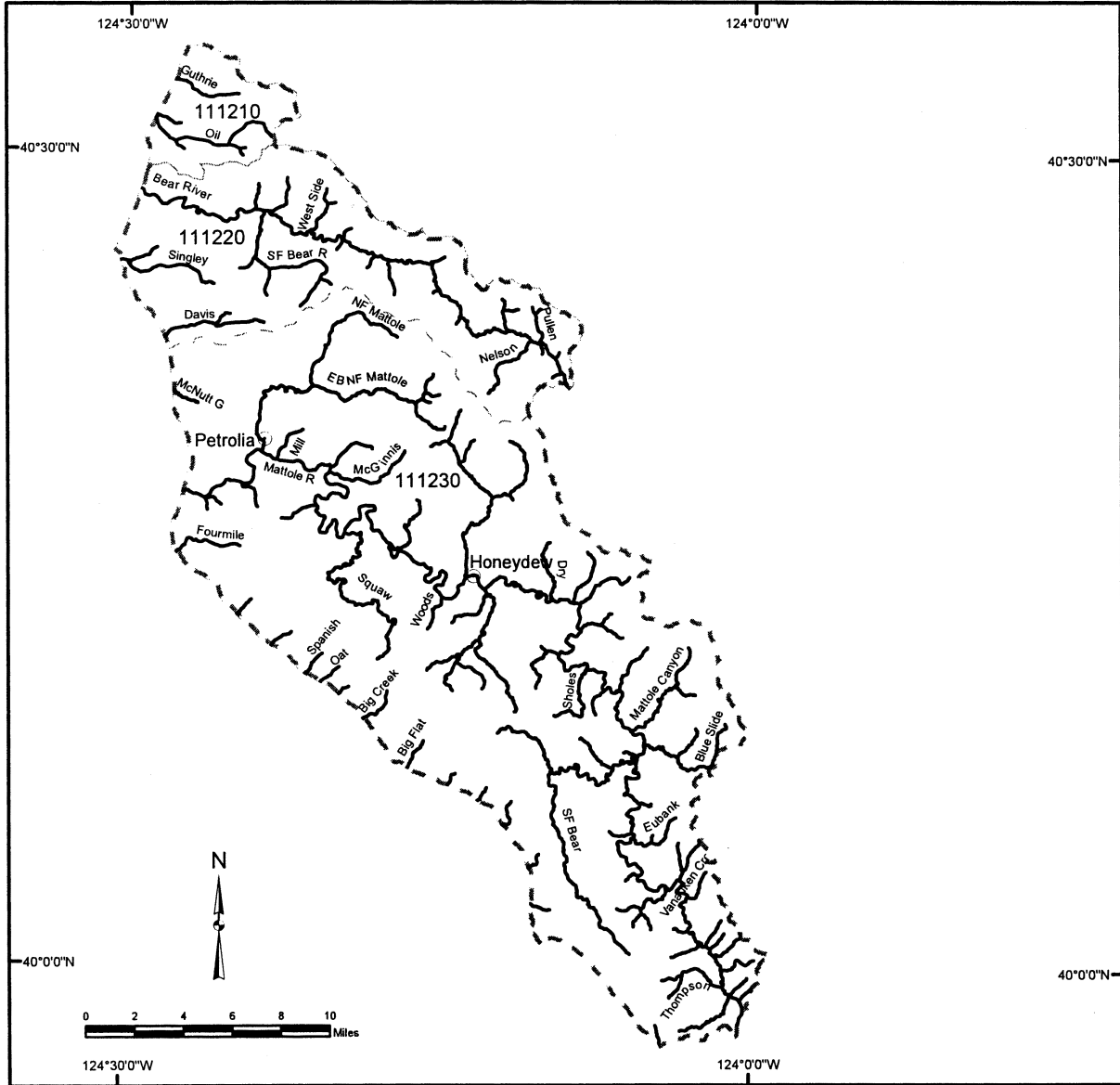
- Cities/Towns
- Critical Habitat
- Occupied but excluded streams / areas
- Hydrologic Unit Boundary
- Fifth Field Calwater Hydrologic Sub-Area Boundary

110701 Fifth Field Calwater Hydrologic Sub-Area Number



Critical Habitat for the Northern California Steelhead

Cape Mendocino Hydrologic Unit 1112

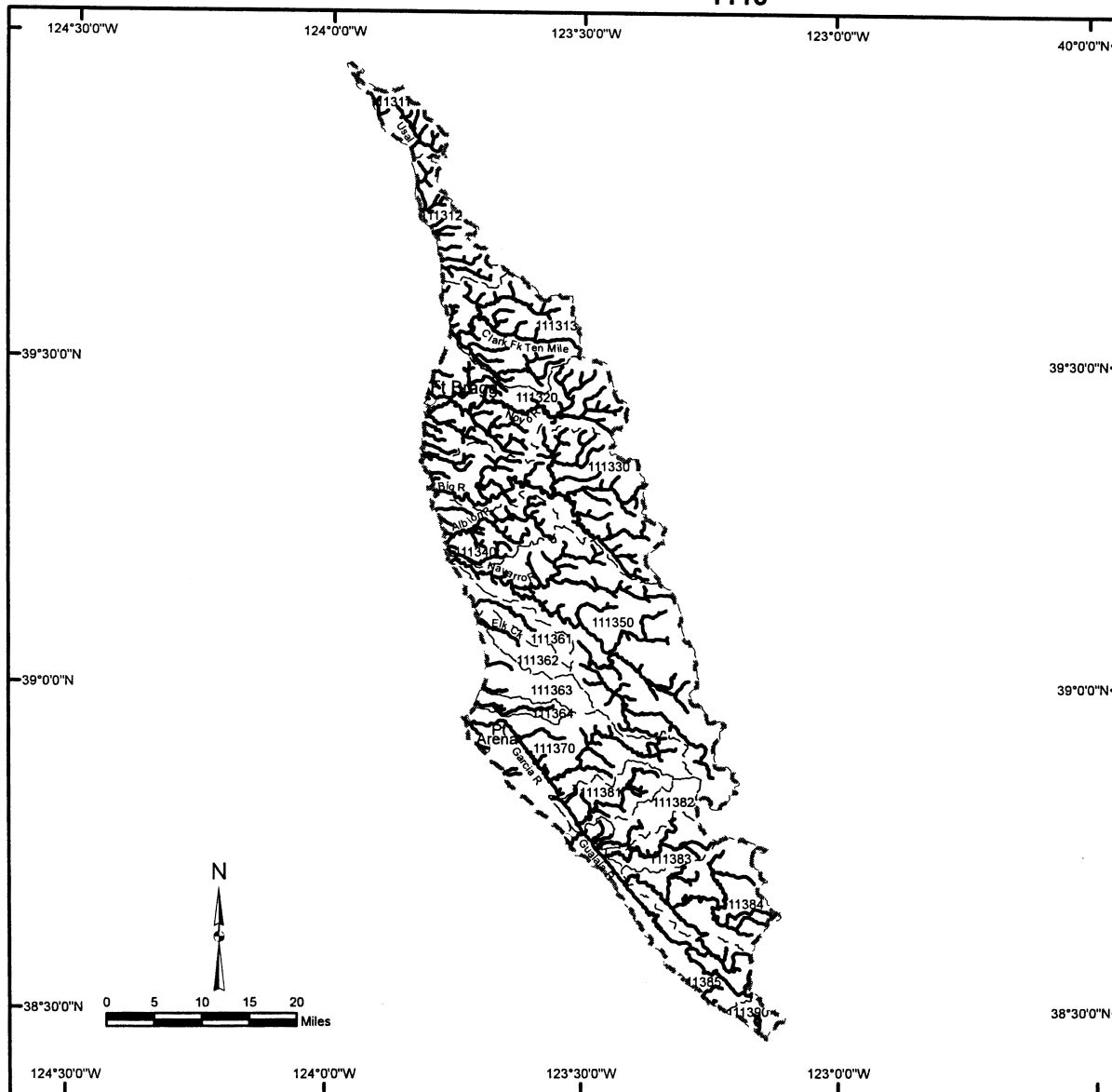


- Cities/Towns
 - Critical Habitat
 - - - Hydrologic Unit Boundary
 - · · Fifth Field Calwater Hydrologic Sub-Area Boundary
- 110701 Fifth Field Calwater Hydrologic Sub-Area Number



Critical Habitat for the Northern California Steelhead

Mendocino Coast Hydrologic Unit 1113



- ⊙ Cities/Towns
- Critical Habitat
- ▣ Hydrologic Unit Boundary
- - - Fifth Field Calwater Hydrologic Sub-Area Boundary

110701 Fifth Field Calwater Hydrologic Sub-Area Number

