

IFQ FISHERY CATCH UPDATE

The following is a “snapshot” of catch, effort, participation and retention in the shorebased, groundfish IFQ fishery for the months of January through October of 2011 and 2012. Data were queried from the Pacific Coast Groundfish Individual Fishing Quota (IFQ) Vessel Accounts Database, of the National Marine Fisheries Service (NMFS) on October 30, 2012. Aggregate catch data for each IFQ species category are available from <https://www.webapps.nwfsc.noaa.gov/ifq/>.

Summary

Near the end of the second year in the IFQ program, there has been little change in non-whiting effort, participation, catch, attainment and retention. Retention of most species remains very high (80-100%) and virtually the same as during 2011. However, retention levels of splitnose rockfish and minor shelf rockfish, north of 40°10' remain low, similar to pre-IFQ (2010) levels. Reasons for higher discard of these species that are related to lack of marketability (e.g. small size) likely remain important.

There has been a drop in whiting effort, participation, and catch, concomitant with the drop in the U.S. whiting TAC and IFQ allocation. Retention rates in the hake fishery are unchanged.

Effort, Participation, Catch, Attainment and Retention

Effort by the non-whiting IFQ fleet during 2012, expressed as number of trips (where a trip is defined as a unique vessel-landing-day), has been very similar during the first ten months of 2012 as 2011 (1,170 versus 1,244, respectively; 94 percent of 2011 levels). The trends in monthly number of trips and total catch per trip have also been very similar (Figure 1, Table 1). Average number of trips so far in 2012 has been 98 percent the level of 2011, and the average catch per trip has been 106 percent of 2011 levels. While the monthly numbers of trips through May were generally higher than during 2011, catch per trip was lower. The reciprocal case was true during the summer and fall, and in the balance, total fleet catch through October was virtually the same as 2011; 2012 was only 2.7 percent higher.

Effort by the shoreside whiting fleet (as number of trips), within the IFQ fishery in 2012, has been somewhat lower than 2011 (74 percent of 2011 levels), while catch per trip is down slightly as well (93 percent of 2011 levels, Figure 2, Table 2). Current hake catch is proportional with the change in allocation size from 2011 to 2012 (at 60 percent of 2011 levels). Thus, there is little difference in whiting attainment (down two percent, which could be partially accounted for by the short lag in discard data).

Monthly participation in the non-whiting fleet has been very similar to 2011 levels (99% of 2012, on average). Average catch per vessel has been only slightly higher than 2011 (104% of 2012, Figure 3, Table 3).

Average monthly whiting participation has been slightly lower than last year (91% of 2011), while average monthly catch per vessel has been 75 percent of 2011 levels (Figure 4, Table 4). Again, the lower U.S. TAC and lower IFQ fishery allocation are important.

Total catch and attainment by species category through October 31 of 2011 and October 29 of 2012 are shown in Figure 5 and Table 5. Species with notable differences in attainment levels between 2011 and 2012 include canary rockfish (up 13%), minor slope rockfish south of 40°10' (up 14%), Pacific cod (up 13%), petrale sole (up 13%), sablefish north (down 18%) and south of 36 (down 8%), and yellowtail rockfish (down 12%, Figure 5, Table 5). Lower sablefish attainment rates are likely related to much lower prices in 2012 than 2011, while increases in some other species could reflect increased targeting of other species to compensate for lower sablefish revenue, and/or may suggest some active catch diversification and specialization in general, during the second year of the new management system. More analysis would be needed for a definitive answer.

Retention levels of splitnose rockfish and minor shelf rockfish, north of 40/10 remain low, similar to pre-IFQ (2010) levels (Figure 6, Table 6). Reasons for higher discard of these species are likely similar as pre-IFQ, related to lack of marketability (e.g. small size).

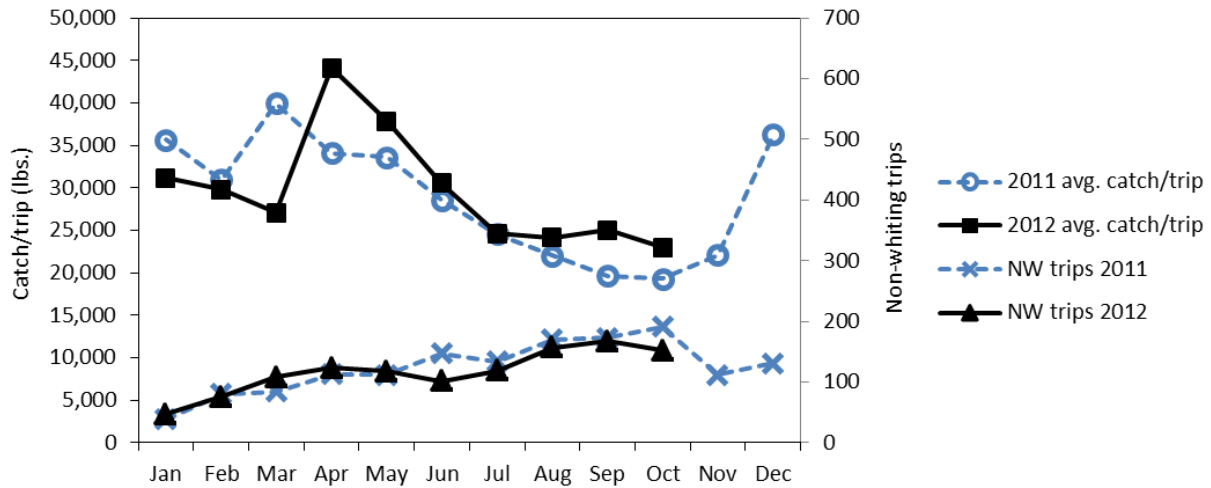


Figure 1. Monthly number of trips and catch per trip (lbs.) by the non-whiting (NW) fleet within the IFQ groundfish fishery in January through October of 2012 versus 2011.

Table 1. Monthly number of trips and catch per trip (lbs.) by the non-whiting fleet within the IFQ groundfish fishery in January through October of 2012 versus 2011.

	2011 avg. catch/trip	2012 avg. catch/trip	2012/2011	S.E. 2011	S.E. 2012	NW trips 2011	NW trips 2012	2012/2011
Jan	35,674	31,199	87%	5,712	4,551	39	47	121%
Feb	30,955	29,788	96%	3,439	3,417	81	76	94%
Mar	39,938	27,055	68%	4,358	2,603	84	108	129%
Apr	34,104	44,143	129%	3,208	3,964	113	124	110%
May	33,640	37,866	113%	3,179	3,486	112	118	105%
Jun	28,582	30,555	107%	2,357	3,025	147	102	69%
Jul	24,548	24,616	100%	2,121	2,257	134	119	89%
Aug	22,027	24,161	110%	1,689	1,928	170	157	92%
Sep	19,655	25,064	128%	1,494	1,940	173	167	97%
Oct	19,344	22,975	119%	1,400	1,864	191	152	80%
Nov	22,117			2,090		112		
Dec	36,284			3,170		131		
	Average		106%			Average		98%

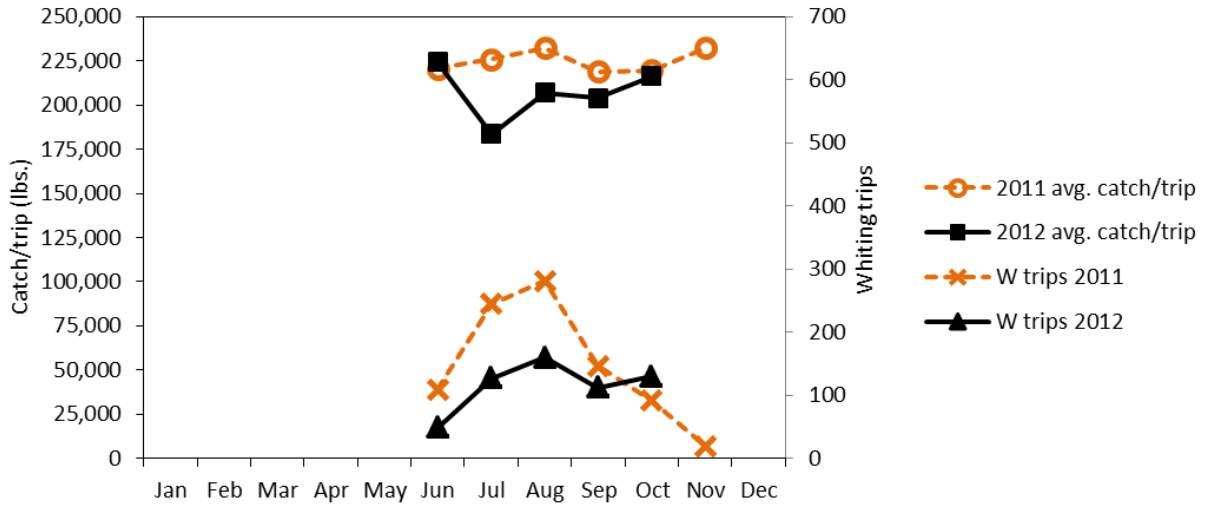


Figure 2. Monthly number of trips and catch per trip (lbs.) by the shoreside whiting fleet (W) within the IFQ groundfish fishery in January through October of 2012 versus 2011.

Table 2. Monthly number of trips and catch per trip (lbs.) by the shoreside whiting fleet within the IFQ groundfish fishery in January through October of 2012 versus 2011.

	2011 avg. catch/trip	2012 avg. catch/trip	2012/2011	S.E. 2011	S.E. 2012	W trips 2011	W trips 2012	2012/2011
Jan								
Feb								
Mar								
Apr								
May								
Jun	220,712	224,240	102%	21,140	32,034	109	49	45%
Jul	226,014	183,376	81%	14,440	16,272	245	127	52%
Aug	232,162	206,875	89%	13,850	16,355	281	160	57%
Sep	219,001	203,986	93%	18,063	19,275	147	112	76%
Oct	219,555	216,380	99%	22,890	18,978	92	130	141%
Nov	232,388			51,964		20		
Dec								
	Average		93%			Average		74%

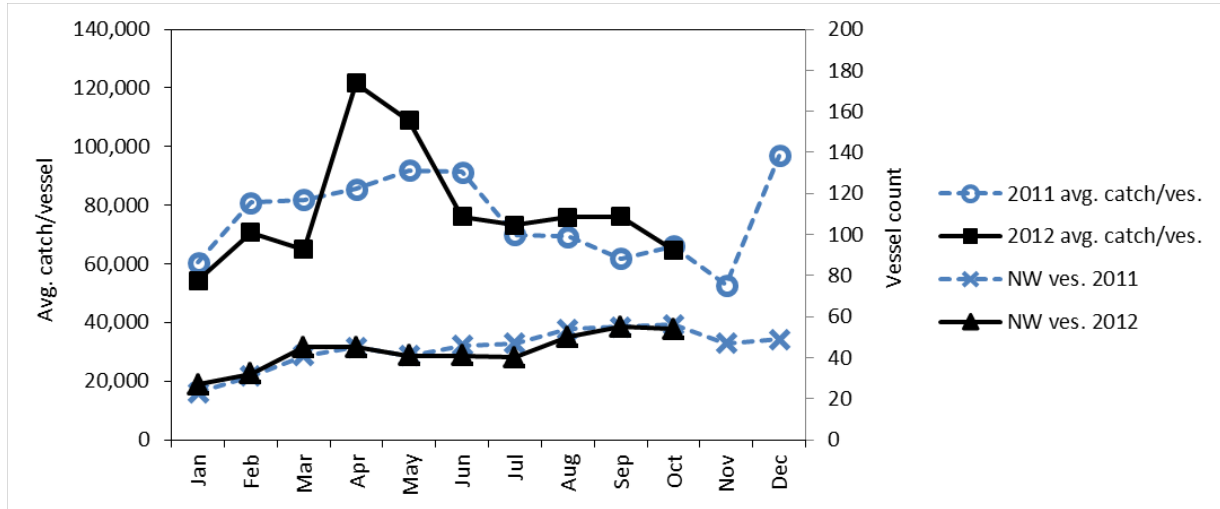


Figure 3. Monthly number of participating vessels and catch per vessel (lbs.) by the non-whiting (NW) fleet within the IFQ groundfish fishery in January through October of 2012 versus 2011.

Table 3. Monthly number of participating vessels and catch per vessel (lbs.) by the non-whiting (NW) fleet within the IFQ groundfish fishery in January through October of 2012 versus 2011.

	2011 avg. catch/ves.	2012 avg. catch/ves.	2012/2011	S.E. 2011	S.E. 2012	NW ves. 2011	NW ves. 2012	2012/2011
Jan	60,491	54,309	90%	12,613	10,452	23	27	117%
Feb	80,882	70,747	87%	14,527	12,506	31	32	103%
Mar	81,823	64,932	79%	12,779	9,680	41	45	110%
Apr	85,640	121,639	142%	12,766	18,133	45	45	100%
May	91,894	108,981	119%	14,351	17,020	41	41	100%
Jun	91,338	76,015	83%	13,467	11,871	46	41	89%
Jul	69,989	73,233	105%	10,209	11,579	47	40	85%
Aug	69,343	75,864	109%	9,436	10,729	54	50	93%
Sep	61,822	76,103	123%	8,336	10,262	55	55	100%
Oct	65,978	64,670	98%	8,817	8,800	56	54	96%
Nov	52,704			7,688		47		
Dec	97,005			13,858		49		
	Average		104%			Average		99%

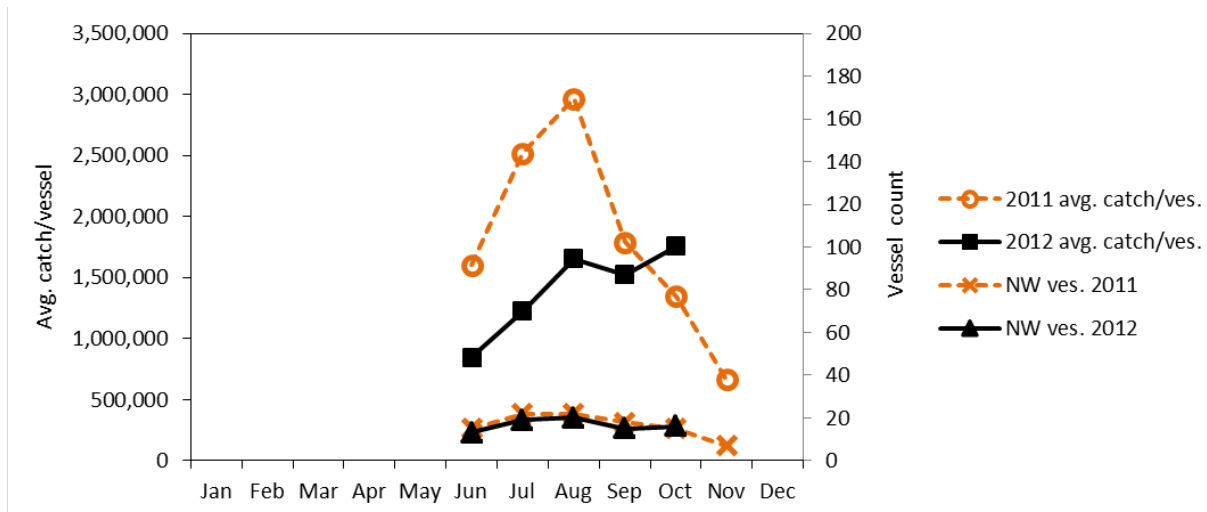


Figure 4. Monthly number of participating vessels and catch per vessel (lbs.) by the shoreside whiting fleet (W) within the IFQ groundfish fishery in January through October of 2012 versus 2011.

Table 4. Monthly number of participating vessels and catch per vessel (lbs.) by the shoreside whiting fleet within the IFQ groundfish fishery in January through October of 2012 versus 2011.

	2011 avg. catch/ves.	2012 avg. catch/ves.	2012/2011	S.E. 2011	S.E. 2012	W ves. 2011	W ves. 2012	2012/2011
Jan								
Feb								
Mar								
Apr								
May								
Jun	1,603,842	845,212	53%	414,110	234,420	15	13	87%
Jul	2,516,977	1,225,723	49%	536,621	281,200	22	19	86%
Aug	2,965,347	1,655,002	56%	632,214	370,070	22	20	91%
Sep	1,788,506	1,523,092	85%	421,555	393,261	18	15	83%
Oct	1,346,604	1,758,086	131%	347,692	439,522	15	16	107%
Nov	663,966			250,956		7		
Dec								
	Average		75%			Average		91%

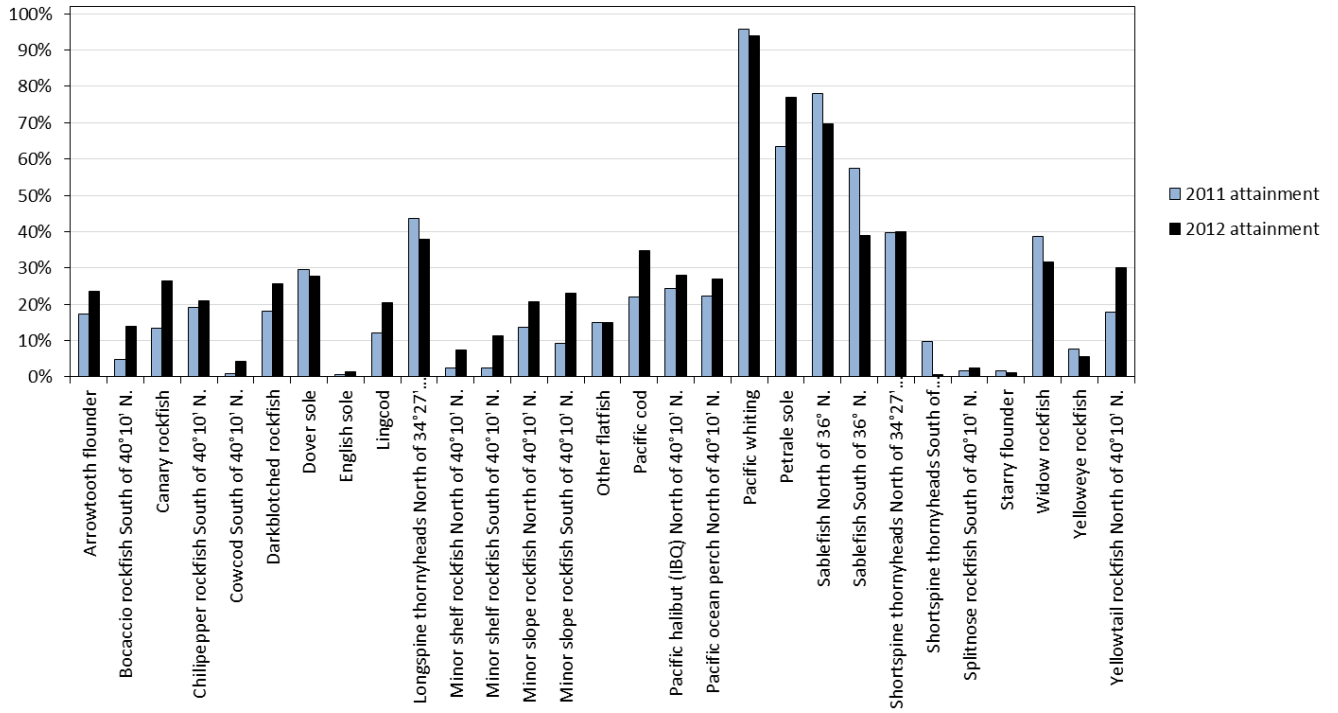


Figure 5. IFQ fishery attainment by species category for January through October of 2011 and 2012.

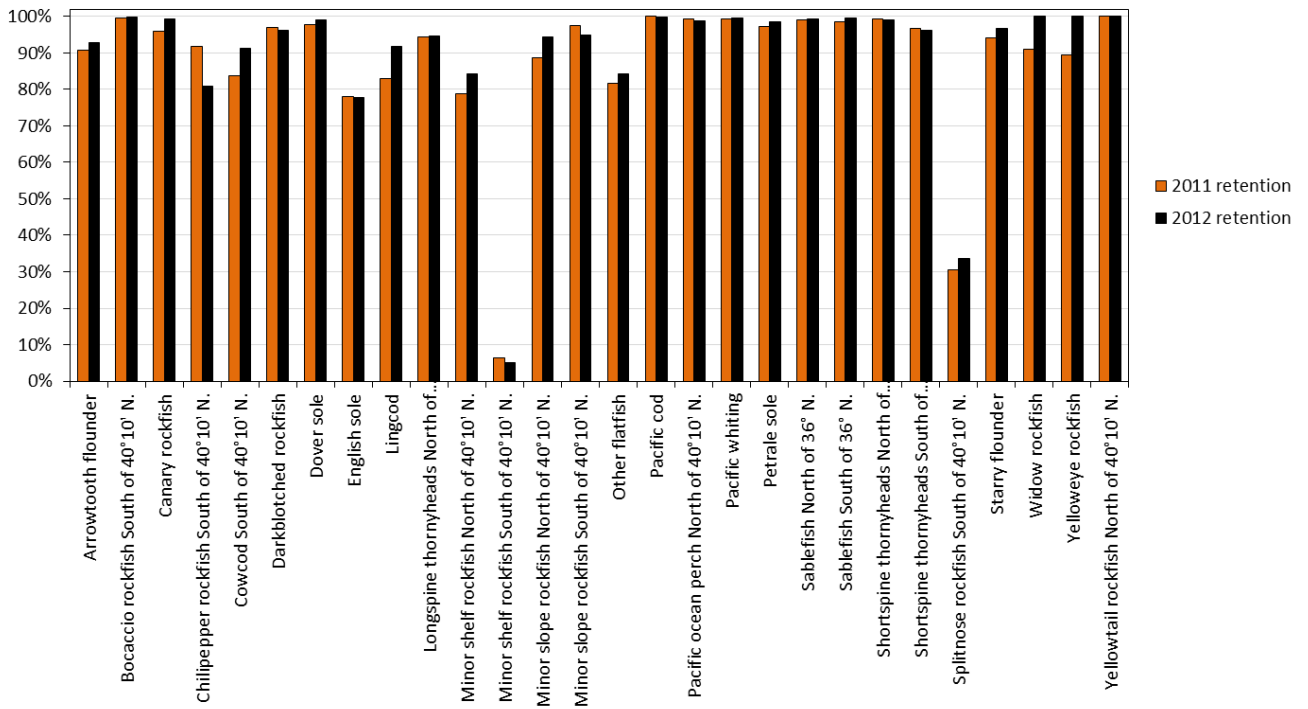


Figure 6. IFQ fishery retention by species category for January through October of 2011 and 2012.

Table 5. IFQ fishery attainment by species category for January through October of 2011 and 2012.

Species Category	2011 NW	2011 W	2011 Total	Allocation	2011 Attain.	2012 NW	2012 W	2012 Total	Allocation	2012 Attain.	Annual dif.	Attain dif. %
Arrowtooth flounder	4,730,486	26,775	4,757,261	27,406,105	17%	4,860,297	52,309	4,912,606	20,861,131	24%	155,345	6%
Bocaccio rockfish South of 40°10' N.	6,332		6,332	132,277	5%	18,285		18,285	132,277	14%	11,953	9%
Canary rockfish	5,724	1,882	7,606	57,100	13%	13,175	2,039	15,214	57,761	26%	7,608	13%
Chilipepper rockfish South of 40°10' N.	625,610		625,610	3,252,370	19%	616,557		616,557	2,934,904	21%	-9,053	2%
Cowcod South of 40°10' N.	37		37	3,968	1%	174		174	3,968	4%	137	3%
Darkblotched rockfish	97,706	2,540	100,246	552,997	18%	133,773	7,445	141,218	548,808	26%	40,972	8%
Dover sole	14,465,056	121	14,465,177	49,018,682	30%	13,567,118	1,315	13,568,433	49,018,682	28%	-896,744	-2%
English sole	266,438	1	266,439	41,166,808	1%	293,591	28	293,619	21,037,611	1%	27,180	1%
Lingcod	485,603	9,882	495,485	4,107,873	12%	807,796	5,734	813,530	3,991,800	20%	318,045	8%
Longspine thornyheads North of 34°27' N.	1,890,660	1	1,890,661	4,334,839	44%	1,596,643	116	1,596,759	4,219,648	38%	-293,902	-6%
Minor shelf rockfish North of 40°10' N.	25,893	1,250	27,143	1,150,813	2%	83,465	1,556	85,021	1,150,813	7%	57,878	5%
Minor shelf rockfish South of 40°10' N.	4,855		4,855	189,598	3%	21,498		21,498	189,598	11%	16,643	9%
Minor slope rockfish North of 40°10' N.	225,532	22,920	248,452	1,828,779	14%	229,056	151,553	380,609	1,828,779	21%	132,157	7%
Minor slope rockfish South of 40°10' N.	76,388		76,388	831,958	9%	190,823		190,823	831,958	23%	114,435	14%
Other flatfish	1,370,580	1,684	1,372,264	9,253,683	15%	1,368,322	9,379	1,377,701	9,253,683	15%	5,437	0%
Pacific cod	545,288	2,548	547,836	2,502,247	22%	868,160	205	868,365	2,502,247	35%	320,529	13%
Pacific halibut (IBQ) North of 40°10' N.	62,009	722	62,731	257,524	24%	64,143	1,289	65,432	232,856	28%	2,701	4%
Pacific ocean perch North of 40°10' N.	58,066	532	58,598	263,148	22%	60,353	10,388	70,741	263,441	27%	12,143	5%
Pacific whiting	378,538	195,756,844	196,135,382	204,628,442	96%	389,502	117,512,765	117,902,267	125,447,480	94%	-78,233,115	-2%
Petrale sole	1,218,343	1	1,218,344	1,920,226	63%	1,787,845	1	1,787,846	2,324,995	77%	569,502	13%
Sablefish North of 36° N.	4,335,810	49,829	4,385,639	5,613,719	78%	3,685,606	103,564	3,789,170	5,438,797	70%	-596,469	-8%
Sablefish South of 36° N.	672,670		672,670	1,170,390	57%	442,144		442,144	1,133,352	39%	-230,526	-18%
Shortspine thornyheads North of 34°27' N.	1,251,141	4,478	1,255,619	3,156,138	40%	1,226,062	18,212	1,244,274	3,120,533	40%	-11,345	0%
Shortspine thornyheads South of 34°27' N.	10,734		10,734	110,231	10%	762		762	110,231	1%	-9,972	-9%
Splitnose rockfish South of 40°10' N.	46,832		46,832	3,045,245	2%	74,680		74,680	3,206,513	2%	27,848	1%
Starry flounder	25,645		25,645	1,471,586	2%	18,172		18,172	1,480,404	1%	-7,473	-1%
Widow rockfish	47,343	244,838	292,181	755,348	39%	86,340	152,549	238,889	755,352	32%	-53,292	-7%
Yelloweye rockfish	103		103	1,323	8%	74		74	1,323	6%	-29	-2%
Yellowtail rockfish North of 40°10' N.	275,966	934,070	1,210,036	6,821,455	18%	1,606,722	461,634	2,068,356	6,850,556	30%	858,320	12%
Total	33,205,388	197,060,918	230,266,306	375,004,872	61%	34,111,138	118,492,081	152,603,219	268,929,501	57%	-77,663,087	-5%

Table 6. IFQ fishery retention by species category for January through October of 2011 and 2012.

Species category	2011 Total catch	2011 Landed	2011 Discarded	2011 Retention	2012 Total catch	2012 Landed	2012 Discarded	2012 Retention	Retention dif.
Arrowtooth flounder	4,730,486	4,284,607	445,879	91%	4,860,297	4,508,591	351,706	93%	2%
Bocaccio rockfish South of 40°10' N.	6,332	6,312	20	100%	18,285	18,257	28	100%	0%
Canary rockfish	5,724	5,408	316	94%	13,175	13,081	94	99%	-5%
Chilipepper rockfish South of 40°10' N.	625,610	574,046	51,564	92%	616,557	498,679	117,878	81%	-11%
Cowcod South of 40°10' N.	37	31	6	84%	174	159	15	91%	8%
Darkblotched rockfish	97,706	94,616	3,090	97%	133,773	128,346	5,427	96%	-1%
Dover sole	14,465,056	14,157,830	307,226	98%	13,567,118	13,441,811	125,307	99%	1%
English sole	266,438	208,084	58,354	78%	293,591	228,156	65,435	78%	0%
Lingcod	485,603	401,604	83,999	83%	807,796	741,360	66,436	92%	9%
Longspine thornyheads North of 34°27' N.	1,890,660	1,784,444	106,216	94%	1,596,643	1,509,643	87,000	95%	0%
Minor shelf rockfish North of 40°10' N.	25,893	20,127	5,766	78%	83,465	70,035	13,430	84%	6%
Minor shelf rockfish South of 40°10' N.	4,855	315	4,540	6%	21,498	1,075	20,423	5%	-1%
Minor slope rockfish North of 40°10' N.	225,532	197,160	28,372	87%	229,056	207,496	21,560	91%	3%
Minor slope rockfish South of 40°10' N.	76,388	74,556	1,832	98%	190,823	181,067	9,756	95%	-3%
Other flatfish	1,370,580	1,119,833	250,747	82%	1,368,322	1,152,180	216,142	84%	2%
Pacific cod	545,288	545,260	28	100%	868,160	866,692	1,468	100%	0%
Pacific halibut (IBQ) North of 40°10' N.	62,009	40	61,969	0%	64,143	136	64,007	0%	0%
Pacific ocean perch North of 40°10' N.	58,066	57,608	458	99%	60,353	59,473	880	99%	-1%
Pacific whiting	378,538	68,002	310,536	18%	389,502	55,676	333,826	14%	-4%
Petrale sole	1,218,343	1,183,425	34,918	97%	1,787,845	1,761,047	26,798	99%	1%
Sablefish North of 36° N.	4,335,810	4,289,935	45,875	99%	3,685,606	3,659,609	25,997	99%	0%
Sablefish South of 36° N.	672,670	662,840	9,830	99%	442,144	440,680	1,464	100%	1%
Shortspine thornyheads North of 34°27' N.	1,251,141	1,240,905	10,236	99%	1,226,062	1,213,049	13,013	99%	0%
Shortspine thornyheads South of 34°27' N.	10,734	10,393	341	97%	762	732	30	96%	-1%
Splitnose rockfish South of 40°10' N.	46,832	14,240	32,592	30%	74,680	25,077	49,603	34%	3%
Starry flounder	25,645	24,107	1,538	94%	18,172	17,595	577	97%	3%
Widow rockfish	47,343	47,189	154	100%	86,340	86,317	23	100%	0%
Yelloweye rockfish	103	92	11	89%	74	74	0	100%	11%
Yellowtail rockfish North of 40°10' N.	275,966	275,950	16	100%	1,606,722	1,606,259	463	100%	0%
Total	33,205,388	31,348,959	1,856,429	94%	34,111,138	32,492,352	1,618,786	95%	1%